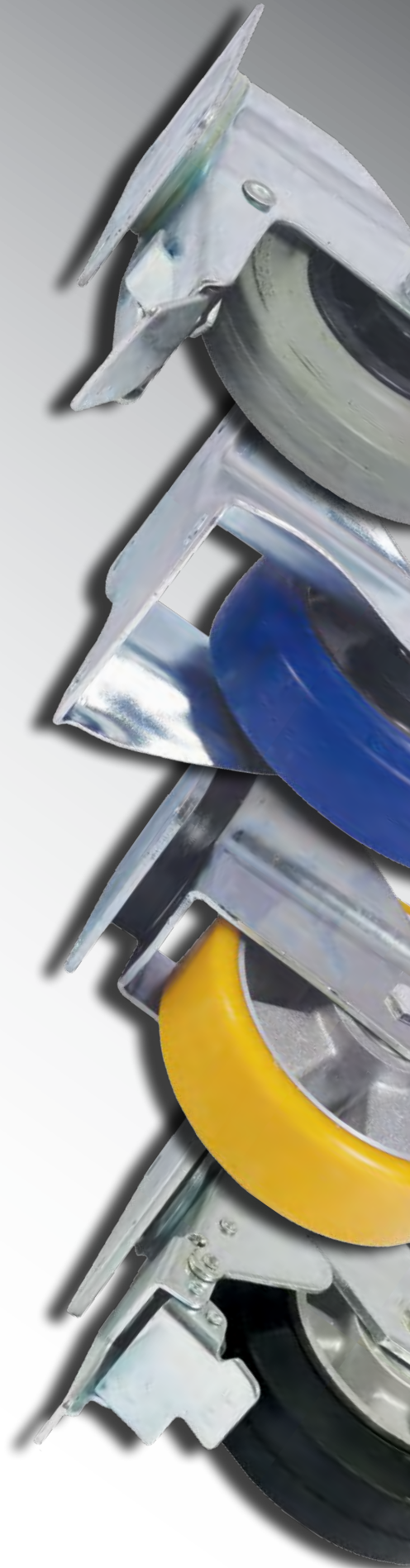


Web: www.keystonecastors.co.uk
Email: sales@keystonecastors.com

Midlands: 0121 772 1010
Northern: 0161 865 3800

The Key Range



KEYSTONE
CASTOR COMPANY

Head Office | Unit 1, St Andrews Trading Estate, 111 Great Barr Street, Birmingham, B9 4BB

Contents

Page #	Series Name	Description	Fitting Type	Wheel Diameter Range (mm)	Load Capacity Range (kg)
1	LDV	Light Duty Pressed Steel	Top Plate & Bolt Hole	50 - 200	50 - 250
2	MDV	Medium Duty Pressed Steel	Top Plate	80 - 200	70 - 350
3	MDVH	Medium Duty Pressed Steel	Bolt Hole	80 - 200	70 - 350
4	MSS	Medium Duty Stainless Steel	Top Plate & Bolt Hole	80 - 200	120 - 300
5	MSK	Medium Heavy Duty Pressed Steel	Top Plate	100 - 200	150 - 500
6	KP	Heavy Duty Pressed Steel	Top Plate	125 - 200	200 - 800
7	MG	Medium Heavy Duty Fabricated Steel	Top Plate	100 - 200	200 - 600
8	HK	Heavy Duty Fabricated Steel	Top Plate	125 - 300	250 - 1400
9	HST	Heavy Duty Fabricated Steel	Top Plate	100 - 200	300 - 950
10	GXT	Extra Heavy Duty Fabricated Steel	Top Plate	80 - 250	500 - 2700
10	UGXT	Ultra Heavy Duty Fabricated Steel	Top Plate	200 - 300	6000 - 8000
11	KGDSP	Shock Absorbing Castor	Top Plate	150 - 250	360 - 450
11	KGD	Levelling Castor	Top Plate & Stem Fitting	42 - 90	60 - 1500
12	K2	Extra Heavy Duty Twin Wheel	Top Plate	125 - 300	750 - 4000
12	PT Designer Wheels	Revvothane Polyurethane Tyre	n/a	75 - 300	300 - 2800
13	Ball Transfer Units	Flange, Drop in, and, Base Plate Models	n/a	n/a	10 - 125

- Load capacities are based on normal working conditions and manually propelled at a maximum speed of 4km/h
- Since load capacity ratings are only general recommendations they can be subject to wide variations under different working conditions. It may be necessary to select a castor with a much higher load rating than the actual weight being carried by the castor
- Factors that affect the required load capacity of a castor include (but not limited to):
 - Uneven floor surface
 - Ramps, slopes, cracks, kerbs, potholes
 - Uneven load distribution
- On equipment to be fitted with 4 castors, it's industry standard to recommend that the minimum load capacity required by a castor is calculated using the formula:
 - Load Capacity of Castor = (Load + Weight of Transport Equipment) / 3
- Unless otherwise stated in the catalogue castors cannot be power towed

Can't find what you're looking for?

With **10,000+** products in stock we have the castor for every requirement

To find the right one for you visit

www.keystonecastors.co.uk

Or call technical sales on

0121 772 1010



- All specifications and recommendations are given to the best of our knowledge and ability. No liability is accepted for their application
- Measurements are in millimetres and load ratings are in kilograms unless otherwise stated
- Specifications (by dimension, description, illustration or otherwise) are approximate and are liable to change without notice especially with regard to developments and improvements
- Listing of goods does not necessarily imply that they are 'Ex stock' nor do we accept any obligation to supply them

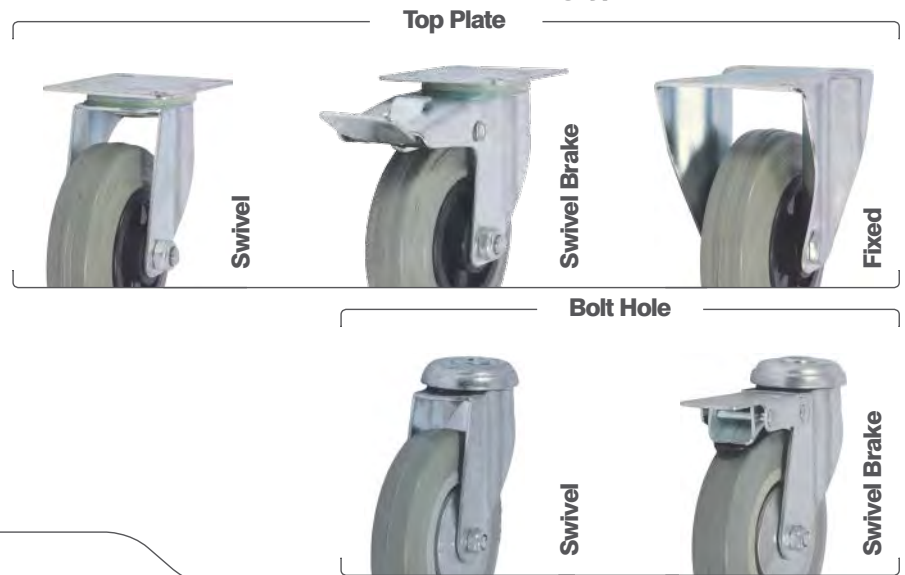
Email: sales@keystonecastors.com

LDV Series

Light Duty Pressed Steel Castor

- Load capacities from 50kg up to 250kg
- Wheel sizes from 50mm to 200mm
- Pressed steel bracket
- Double ball race swivel head

All available in the following types



White Polypropylene

Wheel Dia. (mm)	Tread Width (mm)	Bearing Type	Top Plate (mm)	Bolt Holes (mm)	Offset (mm)	Overall Height (mm)	Load Cap. (kg)	Swivel	Swivel Brake	Fixed
50	18	Plain	50x50	36x36	32	72	50	LSV050PP	LSV050PPBR	N/A
75	25	Plain	75x60	55x42	34	95	70	LSV075PP	LSV075PPBR	LFV075PP
100	35	Roller	102x84	80x60	34	128	125	LSV100PP	LSV100PPBR	LFV100PP
125	37	Roller	102x84	80x60	34	155	160	LSV125PP	LSV125PPBR	LFV125PP
160	40	Roller	135x110	105x80	48	190	200	LSV160PP	LSV160PPBR	LFV160PP
200	40	Roller	135x110	105x80	58	235	250	LSV200PP	LSV200PPBR	LFV200PP



Grey Rubber Tyre

Wheel Dia. (mm)	Tread Width (mm)	Bearing Type	Top Plate (mm)	Bolt Holes (mm)	Offset (mm)	Overall Height (mm)	Load Cap. (kg)	Swivel	Swivel Brake	Fixed
50	18	Plain	50x50	36x36	32	72	50	LSV050RP	LSV050RPBR	N/A
75	25	Roller	75x60	55x42	34	95	50	LSV075RP	LSV075RPBR	LFV075RP
100	24	Roller	102x84	80x60	34	128	70	LSV100RP	LSV100RPBR	LFV100RP
125	24	Roller	102x84	80x60	34	155	100	LSV125RP	LSV125RPBR	LFV125RP
160	22	Plain	135x110	105x80	48	190	135	LSV160RP	LSV160RPBR	LFV160RP
200	30	Plain	135x110	105x80	58	235	205	LSV200RP	LSV200RPBR	LFV200RP



Black Rubber Tyre

Wheel Dia. (mm)	Tread Width (mm)	Bearing Type	Top Plate (mm)	Bolt Holes (mm)	Offset (mm)	Overall Height (mm)	Load Cap. (kg)	Swivel	Swivel Brake	Fixed
75	22	Roller	75x 60	55x42	32	95	50	LSV075RMB	LSV075RMBBR	LFV075RMB
100	24	Roller	102x84	80x60	34	128	70	LSV100RMB	LSV100RMBBR	LFV100RMB
125	24	Roller	102x84	80x60	34	155	100	LSV125RMB	LSV125RMBBR	LFV125RMB
160	22	Roller	135x110	105x80	48	190	160	LSV160RMB	LSV160RMBBR	LFV160RMB
200	30	Roller	135x110	105x80	58	235	205	LSV200RMB	LSV200RMBBR	LFV200RMB



White Polypropylene

Wheel Dia. (mm)	Tread Width (mm)	Bearing Type	Bolt Holes (mm)	Offset (mm)	Overall Height (mm)	Load Cap. (kg)	Swivel	Swivel Brake
50	20	Plain	10	23	72	50	LSV050PPBH	LSV050PPBHBR
75	20	Plain	10	30	100	70	LSV075PPBH	LSV075PPBHBR
100	20	Plain	12	38	135	80	LSV100PPBH	LSV100PPBHBR
125	35	Plain	12	38	155	125	LSV125PPBH	LSV125PPBHBR



Grey Rubber Tyre

Wheel Dia. (mm)	Tread Width (mm)	Bearing Type	Bolt Holes (mm)	Offset (mm)	Overall Height (mm)	Load Cap. (kg)	Swivel	Swivel Brake
50	18	Plain	10	23	72	50	LSV050RPBH	LSV050RPBHBR
75	21	Plain	10	30	100	70	LSV075RPBH	LSV075RPBHBR
100	27	Plain	12	38	135	80	LSV100RPBH	LSV100RPBHBR
125	27	Plain	12	38	155	100	LSV125RPBH	LSV125RPBHBR



MDV Series

Medium Duty Pressed Steel Castor

- Load capacities from 70kg up to 350kg
- Wheel sizes from 80mm to 200mm
- Double ball race swivel head
- Pressed steel bracket

All available in the following types



White Nylon

Wheel Dia. (mm)	Tread Width (mm)	Bearing Type	Top Plate (mm)	Bolt Holes (mm)	Offset (mm)	Overall Height (mm)	Load Cap. (kg)	Swivel	Swivel Brake	Fixed
80	34	Roller	105x80	80x60	40	105	130	MSV080NY1B	MSV080NY1BSWB	MFV080NY1B
100	36	Roller	105x80	80x60	40	128	150	MSV100NY1B	MSV100NY1BSWB	MFV100NY1B
125	38	Roller	105x80	80x60	40	155	200	MSV125NY1B	MSV125NY1BSWB	MFV125NY1B
160	50	Roller	135x110	105x80	55	195	300	MSV160NY1B	MSV160NY1BSWB	MFV160NY1B
200	50	Roller	135x110	105x80	55	235	300	MSV200NY1B	MSV200NY1BSWB	MFV200NY1B



Grey Rubber Tyre

Wheel Dia. (mm)	Tread Width (mm)	Bearing Type	Top Plate (mm)	Bolt Holes (mm)	Offset (mm)	Overall Height (mm)	Load Cap. (kg)	Swivel	Swivel Brake	Fixed
80	35	Roller	105x80	80x60	40	105	70	MSV080GRP1B	MSV080GRP1BSWB	MFV080GRP1B
100	35	Roller	105x80	80x60	40	128	75	MSV100GRP1B	MSV100GRP1BSWB	MFV100GRP1B
125	38	Roller	105x80	80x60	40	155	100	MSV125GRP1B	MSV125GRP1BSWB	MFV125GRP1B
160	40	Roller	135x110	105x80	55	195	135	MSV160GRP1B	MSV160GRP1BSWB	MFV160GRP1B
200	50	Roller	135x110	105x80	55	235	205	MSV200GRP1B	MSV200GRP1BSWB	MFV200GRP1B



Black Rubber Tyre

Wheel Dia. (mm)	Tread Width (mm)	Bearing Type	Top Plate (mm)	Bolt Holes (mm)	Offset (mm)	Overall Height (mm)	Load Cap. (kg)	Swivel	Swivel Brake	Fixed
80	35	Roller	105x80	80x60	40	105	70	MSV080BRP1B	MSV080BRP1BSWB	MFV080BRP1B
100	35	Roller	105x80	80x60	40	128	75	MSV100BRP1B	MSV100BRP1BSWB	MFV100BRP1B
125	38	Roller	105x80	80x60	40	155	100	MSV125BRP1B	MSV125BRP1BSWB	MFV125BRP1B
160	40	Roller	135x110	105x80	55	195	135	MSV160BRP1B	MSV160BRP1BSWB	MFV160BRP1B
200	50	Roller	135x110	105x80	55	235	205	MSV200BRP1B	MSV200BRP1BSWB	MFV200BRP1B



Blue Rubber Tyre

Wheel Dia. (mm)	Tread Width (mm)	Bearing Type	Top Plate (mm)	Bolt Holes (mm)	Offset (mm)	Overall Height (mm)	Load Cap. (kg)	Swivel	Swivel Brake	Fixed
80	35	Roller	105x80	80x60	40	105	130	MSV080RN1B	MSV080RN1BSWB	MFV080RN1B
100	35	Roller	105x80	80x60	40	128	160	MSV100RN1B	MSV100RN1BSWB	MFV100RN1B
125	38	Roller	105x80	80x60	40	155	200	MSV125RN1B	MSV125RN1BSWB	MFV125RN1B
160	46	Roller	135x110	105x80	55	195	300	MSV160RN1B	MSV160RN1BSWB	MFV160RN1B
200	46	Roller	135x110	105x80	55	235	350	MSV200RN1B	MSV200RN1BSWB	MFV200RN1B



Red Polyurethane Tyre/Nylon Centre

Wheel Dia. (mm)	Tread Width (mm)	Bearing Type	Top Plate (mm)	Bolt Holes (mm)	Offset (mm)	Overall Height (mm)	Load Cap. (kg)	Swivel	Swivel Brake	Fixed
80	32	Roller	105x80	80x60	40	105	130	MSV080PN1B	MSV080PN1BSWB	MFV080PN1B
100	32	Roller	105x80	80x60	40	128	150	MSV100PN1B	MSV100PN1BSWB	MFV100PN1B
125	32	Roller	105x80	80x60	40	155	200	MSV125PN1B	MSV125PN1BSWB	MFV125PN1B
160	50	Roller	135x110	105x80	55	195	300	MSV160PN1B	MSV160PN1BSWB	MFV160PN1B
200	50	Roller	135x110	105x80	55	235	350	MSV200PN1B	MSV200PN1BSWB	MFV200PN1B

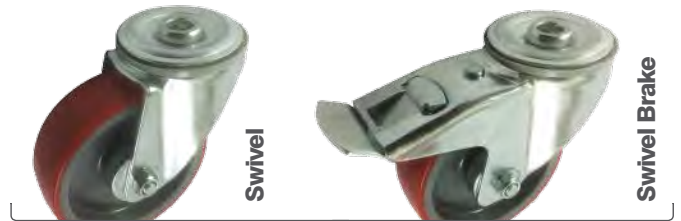


MDVH Series

Medium Duty Pressed Steel Castor

- Load capacities from 70kg up to 350kg
- Wheel sizes from 80mm to 200mm
- Double ball race swivel head
- Pressed steel bracket

All available in the following types



White Nylon

Wheel Dia. (mm)	Tread Width (mm)	Bearing Type	Bolt Hole Size (mm)	Offset (mm)	Overall height (mm)	Load Cap. (kg)	Swivel	Swivel Brake
80	34	Roller	13	40	104	130	MSVH080NY1B	MSVH080NY1BSWB
100	36	Roller	13	40	127	150	MSVH100NY1B	MSVH100NY1BSWB
125	38	Roller	13	40	154	150	MSVH125NY1B	MSVH125NY1BSWB
160	50	Roller	13	55	191	200	MSVH160NY1B	MSVH160NY1BSWB
200	50	Roller	13	58	231	200	MSVH200NY1B	MSVH200NY1BSWB



Grey Rubber Tyre / Nylon Centre

Wheel Dia. (mm)	Tread Width (mm)	Bearing Type	Bolt Hole Size (mm)	Offset (mm)	Overall height (mm)	Load Cap. (kg)	Swivel	Swivel Brake
80	35	Roller	12	40	104	70	MSVH080GRP1B	MSVH080GRP1BSWB
100	35	Roller	12	40	127	75	MSVH100GRP1B	MSVH100GRP1BSWB
125	38	Roller	12	40	154	100	MSVH125GRP1B	MSVH125GRP1BSWB
160	40	Roller	12	55	191	135	MSVH160GRP1B	MSVH160GRP1BSWB
200	50	Roller	12	55	231	205	MSVH200GRP1B	MSVH200GRP1BSWB



Black Rubber Tyre / Nylon Centre

Wheel Dia. (mm)	Tread Width (mm)	Bearing Type	Bolt Hole Size (mm)	Offset (mm)	Overall height (mm)	Load Cap. (kg)	Swivel	Swivel Brake
80	35	Roller	13	40	104	70	MSVH080BRP1B	MSVH080BRP1BSWB
100	35	Roller	13	40	127	75	MSVH100BRP1B	MSVH100BRP1BSWB
125	38	Roller	13	40	154	100	MSVH125BRP1B	MSVH125BRP1BSWB
160	40	Roller	13	55	191	135	MSVH160BRP1B	MSVH160BRP1BSWB
200	50	Roller	13	55	231	205	MSVH200BRP1B	MSVH200BRP1BSWB



Blue Rubber Tyre / Nylon Centre

Wheel Dia. (mm)	Tread Width (mm)	Bearing Type	Bolt Hole Size (mm)	Offset (mm)	Overall height (mm)	Load Cap. (kg)	Swivel	Swivel Brake
80	35	Roller	13	40	104	130	MSVH080RN1B	MSV080RN1BSWB
100	35	Roller	13	40	127	150	MSVH100RN1B	MSVH100RN1BSWB
125	38	Roller	13	40	154	150	MSVH125RN1B	MSVH125RN1BSWB
160	46	Roller	13	55	191	200	MSVH160RN1B	MSVH160RN1BSWB
200	46	Roller	13	58	231	250	MSVH200RN1B	MSVH200RN1BSWB



Red Polyurethane Tyre/Nylon Centre

Wheel Dia. (mm)	Tread Width (mm)	Bearing Type	Bolt Hole Size (mm)	Offset (mm)	Overall height (mm)	Load Cap. (kg)	Swivel	Swivel Brake
80	32	Roller	13	40	104	130	MSVH080PN1B	MSVH080PN1BSWB
100	32	Roller	13	40	127	150	MSVH100PN1B	MSVH100PN1BSWB
125	32	Roller	13	45	154	150	MSVH125PN1B	MSVH125PN1BSWB
160	50	Roller	13	55	191	200	MSVH160PN1B	MSVH160PN1BSWB
200	50	Roller	13	55	231	250	MSVH200PN1B	MSVH200PN1BSWB



MSS Series

Medium Duty Stainless Steel Castor

- Load capacities from 120kg up to 300kg
- Wheel sizes from 80mm to 200mm
- Strong stainless steel bracket
- Double ball race swivel head

All available in the following types

Top Plate



Bolt Hole



Wheel bearing Key

Plain bearing

Roller bearing

White Nylon

Top plate	Wheel Dia. (mm)	Tread Width (mm)	Bearing	Top Plate (mm)	Bolt Holes (mm)	Offset (mm)	Total Height (mm)	Load Cap. (kg)	Swivel	Swivel Braked	Fixed
	80	30	Plain	100x85	80x60	37	107	150	MSS080NY	MSS080NYBR	MFS080NY
	100	30	Plain	100x85	80x60	37	128	150	MSS100NY	MSS100NYBR	MFS100NY
	125	40	Plain	115x85	80x60	42	155	150	MSS125NY	MSS125NYBR	MFS125NY
	160	40	Plain	140x110	105x80	55	197	300	MSS160NY	MSS160NYBR	MFS160NY
	200	50	Plain	140x110	105x80	55	235	300	MSS200NY	MSS200NYBR	MFS200NY

Bolt hole	Wheel Dia. (mm)	Tread Width (mm)	Bolt Hole (mm)	Offset (mm)	Overall Height (mm)	Load Cap. (kg)	Swivel	Swivel Brake	Swivel	Swivel Brake
	80	30	12	37	105	150	MSS080NYBH	MSS080NYBHBR	MSS080NYBBH	MSS080NYBBHBR
	100	30	12	37	126	150	MSS100NYBH	MSS100NYBHBR	MSS100NYBBH	MSS100NYBBHBR
	125	40	12	42	150	150	MSS125NYBH	MSS125NYBHBR	MSS125NYBBH	MSS125NYBBHBR
	150	40	12	45	178	200	MSS150NYBH	MSS150NYBHBR	MSS150NYBBH	MSS150NYBBHBR
	160	40	16	55	194	300	MSS160NYBH	MSS160NYBHBR	MSS160NYBBH	MSS160NYBBHBR
	200	50	16	55	232	300	MSS200NYBH	MSS200NYBHBR	MSS200NYBBH	MSS200NYBBHBR



Polyurethane Tyre/Nylon Centre

Top plate	Wheel Dia. (mm)	Tread Width (mm)	Top Plate (mm)	Bolt Holes (mm)	Offset (mm)	Total Height (mm)	Load Cap. (kg)	Swivel	Swivel Brake	Fixed	Swivel	Swivel Brake	Fixed
	80	30	100x85	80x60	37	107	120	MSS080PN	MSS080PNBR	MFS080PN	MSS080PNB	MSS080PNBBR	MFS080PNB
	100	30	100x85	80x60	37	128	150	MSS100PN	MSS100PNBR	MFS100PN	MSS100PNB	MSS100PNBBR	MFS100PNB
	125	35	115x85	80x60	42	155	150	MSS125PN	MSS125PNBR	MFS125PN	MSS125PNB	MSS125PNBBR	MFS125PNB
	150	40	115x85	80x60	45	181	150	MSS150PN	MSS150PNBR	MFS150PN	MSS150PNB	MSS150PNBBR	MFS150PNB
	200	50	140x110	105x80	55	235	300	MSS200PN	MSS200PNBR	MFS200PN	MSS200PNB	MSS200PNBBR	MFS200PNB

Bolt hole	Wheel Dia. (mm)	Tread Width (mm)	Bolt Hole (mm)	Offset (mm)	Overall Height (mm)	Load Cap. (kg)	Swivel	Swivel Brake	Swivel	Swivel Brake
	80	30	12	37	105	120	MSS080PNBH	MSS080PNBHBR	MSS080PNBBH	MSS080PNBBHBR
	100	30	12	37	126	150	MSS100PNBH	MSS100PNBHBR	MSS100PNBBH	MSS100PNBBHBR
	125	35	12	42	150	150	MSS125PNBH	MSS125PNBHBR	MSS125PNBBH	MSS125PNBBHBR
	150	40	12	45	178	150	MSS150PNBH	MSS150PNBHBR	MSS150PNBBH	MSS150PNBBHBR
	200	50	16	55	232	300	MSS200PNBH	MSS200PNBHBR	MSS200PNBBH	MSS200PNBBHBR



Elastic Rubber Tyre/Polyamide Centre

Top plate	Wheel Dia. (mm)	Tread Width (mm)	Bearing	Top Plate (mm)	Bolt Holes (mm)	Offset (mm)	Overall Height (mm)	Load Cap. (kg)	Swivel	Swivel Brake	Fixed
	80	36	Roller	100x85	80x60	37	108	120	MSS080RNB	MSS080RNB	MFS080RNB
	100	36	Roller	100x85	80x60	37	128	150	MSS100RNB	MSS100RNB	MFS100RNB
	125	36	Roller	115x85	80x60	42	155	150	MSS125RNB	MSS125RNB	MFS125RNB
	160	50	Roller	140x110	105x80	55	197	300	MSS160RNB	MSS160RNB	MFS160RNB
	200	50	Roller	140x110	105x80	55	235	300	MSS200RNB	MSS200RNB	MFS200RNB

Bolt hole	Wheel Dia. (mm)	Tread Width (mm)	Bearing Type	Bolt Hole (mm)	Offset (mm)	Overall Height (mm)	Load Cap. (kg)	Swivel	Swivel Brake
	100	36	Roller	12	37	126	150	MSS100RNBH	MSS100RNBHBR
	125	36	Roller	12	42	150	150	MSS125RNBH	MSS125RNBHBR
	160	50	Roller	16	55	194	300	MSS160RNBH	MSS160RNBHBR
	200	50	Roller	16	55	232	300	MSS200RNBH	MSS200RNBHBR



MSK Series

Medium Heavy Duty Pressed Steel Castor

- Load capacities from 150kg up to 500kg
- Wheel sizes from 100mm to 200mm
- Heavy duty pressed steel bracket
- Double ball race swivel head

All available in the following types



White Nylon

Wheel Dia. (mm)	Tread Width (mm)	Bearing Type	Top Plate (mm)	Bolt Holes (mm)	Offset (mm)	Overall Height (mm)	Load Cap. (kg)	Swivel	Swivel Brake	Fixed
100	34	Plain	105x85	80x60	45	130	250	MSK100NY	MSK100NYBR	MFK100NY
100	34	Roller	105x85	80x60	45	130	250	MSK100NY1B	MSK100NY1BBR	MFK100NY1B
100	38	Ball	105x85	80x60	45	130	300	MSK100NY2B	MSK100NY2BBR	MFK100NY2B
125	32	Plain	105x85	80x60	45	157	250	MSK125NY	MSK125NYBR	MFK125NY
125	40	Roller	105x85	80x60	45	157	250	MSK125NY1B	MSK125NY1BBR	MFK125NY1B
125	38	Ball	105x85	80x60	45	157	300	MSK125NY2B	MSK125NY2BBR	MFK125NY2B
160	40	Plain	137x105	105x80	55	200	500	MSK160NY	MSK160NYBR	MFK160NY
160	40	Roller	137x105	105x80	55	200	400	MSK160NY1B	MSK160NY1BBR	MFK160NY1B
160	50	Ball	137x105	105x80	55	200	500	MSK160NY2B	MSK160NY2BBR	MFK160NY2B
200	50	Plain	137x105	105x80	55	240	500	MSK200NY	MSK200NYBR	MFK200NY
200	50	Roller	137x105	105x80	55	240	500	MSK200NY1B	MSK200NY1BBR	MFK200NY1B
200	50	Ball	137x105	105x80	55	240	500	MSK200NY2B	MSK200NY2BBR	MFK200NY2B



Blue Rubber Tyre

Wheel Dia. (mm)	Tread Width (mm)	Bearing Type	Top Plate (mm)	Bolt Holes (mm)	Offset (mm)	Overall Height (mm)	Load Cap. (kg)	Swivel	Swivel Brake	Fixed
100	35	Roller	105x85	80x60	45	130	150	MSK100RN1B	MSK100RN1BBR	MFK100RN1B
125	40	Roller	105x85	80x60	45	157	250	MSK125RN1B	MSK125RN1BBR	MFK125RN1B
160	50	Ball	137x105	105x80	55	200	300	MSK160RN2B	MSK160RN2BBR	MFK160RN2B
200	50	Ball	137x105	105x80	55	240	400	MSK200RN2B	MSK200RN2BBR	MFK200RN2B



Polyurethane Tyre/Nylon Centre

Wheel Dia. (mm)	Tread Width (mm)	Bearing Type	Top Plate (mm)	Bolt Holes (mm)	Offset (mm)	Overall Height (mm)	Load Cap. (kg)	Swivel	Swivel Brake	Fixed
100	35	Roller	105x85	80x60	45	130	150	MSK100PN1B	MSK100PN1BBR	MFK100PN1B
125	30	Roller	105x85	80x60	45	157	250	MSK125PN1B	MSK125PN1BBR	MFK125PN1B
160	40	Roller	137x105	105x80	55	200	400	MSK160PN1B	MSK160PN1BBR	MFK160PN1B
160	50	Ball	137x105	105x80	55	200	480	MSK160PN2B	MSK160PN2BBR	MFK160PN2B
200	50	Roller	137x105	105x80	55	240	500	MSK200PN1B	MSK200PN1BBR	MFK200PN1B
200	50	Ball	137x105	105x80	55	240	500	MSK200PN2B	MSK200PN2BBR	MFK200PN2B



Polyurethane Tyre/Aluminium Centre

Wheel Dia. (mm)	Tread Width (mm)	Bearing Type	Top Plate (mm)	Bolt Holes (mm)	Offset (mm)	Overall Height (mm)	Load Cap. (kg)	Swivel	Swivel Brake	Fixed
160	50	Ball	137x 105	105x80	55	200	500	MSK160PA2B	MSK160PA2BBR	MFK160PA2B



Polyurethane Tyre/Cast Iron Centre

Wheel Dia. (mm)	Tread Width (mm)	Bearing Type	Top Plate (mm)	Bolt Holes (mm)	Offset (mm)	Overall Height (mm)	Load Cap. (kg)	Swivel	Swivel Brake	Fixed
100	40	Ball	105x85	80x60	45	130	300	MSK100PC2B	MSK100PC2BBR	MFK100PC2B
125	40	Ball	105x85	80x60	45	157	300	MSK125PC2B	MSK125PC2BBR	MFK125PC2B
160	50	Ball	137x105	105x80	55	200	500	MSK160PC2B	MSK160PC2BBR	MFK160PC2B
200	50	Ball	137x105	105x80	55	240	500	MSK200PC2B	MSK200PC2BBR	MFK200PC2B



KP Series

Heavy Duty Pressed Steel Castor

- Double Ball Race
- Load Capacities from 200kg to 800kg
- Heavy Duty Pressed Steel Bracket

All available in the following types



White Nylon

Wheel Dia. (mm)	Tread Width (mm)	Bearing Type	Top Plate (mm)	Bolt Holes (mm)	Suit Bolt (mm)	Offset (mm)	Overall Height (mm)	Load Cap. (kg)	Swivel	Swivel Brake	Fixed
125	40	Ball	135x110	105x80	12	45	166	400	KS125NYBJ400	KS125NYBJ400SWB	KF125NYBJ400
160	50	Ball	135X110	105X80	12	57	216	500	KS160NYBJ500	KS160NYBJ500SWB	KF160NYBJ500
200	50	Ball	135X110	105X80	12	57	251	800	KS200NYBJ800	KS200NYBJ800SWB	KF200NYBJ800



Elastic Rubber / Aluminium Centre

Wheel Dia. (mm)	Tread Width (mm)	Bearing Type	Top Plate (mm)	Bolt Holes (mm)	Suit Bolt (mm)	Offset (mm)	Overall Height (mm)	Load Cap. (kg)	Swivel	Swivel Brake	Fixed
125	40	Ball	135x110	105x80	12	45	166	200	KS125EAB200	KS125EAB200SWB	KF125EAB200
160	50	Ball	135x110	105x80	12	57	216	300	KS160EAB330	KS160EAB330SWB	KF160EAB330
200	50	Ball	135x110	105x80	12	57	251	400	KS200EAB400	KS200EAB400SWB	KF200EAB400



Polyurethane Tyre / Aluminium Centre

Wheel Dia. (mm)	Tread Width (mm)	Bearing Type	Top Plate (mm)	Bolt Holes (mm)	Suit Bolt (mm)	Offset (mm)	Overall Height (mm)	Load Cap. (kg)	Swivel	Swivel Brake	Fixed
125	40	Ball	135x110	105x80	12	45	166	300	KS125PAB300	KS125PAB300SWB	KF125PAB300
160	50	Ball	135x110	105x80	12	57	216	500	KS150PAB500	KS150PAB500SWB	KF150PAB500
200	50	Ball	135X110	105X80	12	57	251	800	KS125PAB800	KS125PAB800SWB	KF125PAB800



Polyurethane Tyre / Cast Iron Centre

Wheel Dia. (mm)	Tread Width (mm)	Bearing Type	Top Plate (mm)	Bolt Holes (mm)	Suit Bolt (mm)	Offset (mm)	Overall Height (mm)	Load Cap. (kg)	Swivel	Swivel Brake	Fixed
125	40	Ball	135x110	105x80	12	45	166	400	KS125PCBJ400	KS125PCBJ400SWB	KF125PCBJ400
150	40	Ball	135X110	105X80	12	57	189	500	KS150PCBJ500	KS150PCBJ500SWB	KF150PCBJ500
200	50	Ball	135X110	105X80	12	57	251	800	KS200APCBJ800	KS200APCBJ800SWB	KF200APCBJ800



MG Series

Medium Heavy Duty Fabricated Steel Castor

- Load capacities from 200kg up to 600kg
- Wheel sizes from 100mm to 200mm
- Robust fabricated steel bracket
- Double ball race swivel head
- Double pedal brake

All available in the following types



White Nylon

Wheel Dia. (mm)	Tread Width (mm)	Bearing Type	Top Plate (mm)	Bolt Holes (mm)	Offset (mm)	Overall Height (mm)	Load Cap. (kg)	Swivel	Swivel Brake	Fixed
100	50	Ball	135x110	105x80	35	143	270	KSMG100NYB	KBMG100NYB	KFMG100NYB
125	45	Ball	135x110	105x80	39	165	350	KSMG125NYB	KBMG125NYB	KFMG125NYB
150	50	Ball	135x110	105x80	45	190	500	KSMG150NYB	KBMG150NYB	KFMG150NYB
160	50	Ball	135x110	105x80	45	195	450	KSMG160NYB	KBMG160NYB	KFMG160NYB
200	50	Roller	135x110	105x80	56	240	500	KSMG200NYB	KBMG200NYB	KFMG200NYB



Elastic Rubber Tyre/Aluminium Centre

Wheel Dia. (mm)	Tread Width (mm)	Bearing Type	Top Plate (mm)	Bolt Holes (mm)	Offset (mm)	Overall Height (mm)	Load Cap. (kg)	Swivel	Swivel Brake	Fixed
100	40	Ball	135x110	105x80	35	143	200	KSMG100EAB	KBMG100EAB	KFMG100EAB
125	50	Ball	135x110	105x80	39	165	250	KSMG125EAB	KBMG125EAB	KFMG125EAB
150	50	Ball	135x110	105x80	45	190	300	KSMG150EAB	KBMG150EAB	KFMG150EAB
160	50	Ball	135x110	105x80	45	195	300	KSMG160EAB	KBMG160EAB	KFMG160EAB
200	50	Ball	135x110	105x80	56	240	400	KSMG200EAB	KBMG200EAB	KFMG200EAB



Rubber Tyre/Cast Iron Centre

Wheel Dia. (mm)	Tread Width (mm)	Bearing Type	Top Plate (mm)	Bolt Holes (mm)	Offset (mm)	Overall Height (mm)	Load Cap. (kg)	Swivel	Swivel Brake	Fixed
150	50	Ball	135x110	105x80	45	190	400	KSMG150RUB	KBMG150RUB	KFMG150RUB
200	50	Ball	135x110	105x80	56	240	500	KSMG200RUB	KBMG200RUB	KFMG200RUB



Polyurethane Tyre/Aluminium Centre

Wheel Dia. (mm)	Tread Width (mm)	Bearing Type	Top Plate (mm)	Bolt Holes (mm)	Offset (mm)	Overall Height (mm)	Load Cap. (kg)	Swivel	Swivel Brake	Fixed
160	50	Ball	135x110	105x80	45	195	500	KSMG160PAB	KBMG160PAB	KFMG160PAB
200	50	Ball	135x110	105x80	56	240	600	KSMG200PAB	KBMG200PAB	KFMG200PAB



Polyurethane Tyre/Cast Iron Centre

Wheel Dia. (mm)	Tread Width (mm)	Bearing Type	Top Plate (mm)	Bolt Holes (mm)	Offset (mm)	Overall Height (mm)	Load Cap. (kg)	Swivel	Swivel Brake	Fixed
100	40	Ball	135x110	105x80	35	143	350	KSMG100PCB	KBMG100PCB	KFMG100PCB
125	50	Ball	135x110	105x80	39	165	400	KSMG125PCB	KBMG125PCB	KFMG125PCB
150	50	Ball	135x110	105x80	45	190	500	KSMG150PCB	KBMG150PCB	KFMG150PCB
160	50	Ball	135x110	105x80	45	195	500	KSMG160PCB	KBMG160PCB	KFMG160PCB
200	50	Ball	135x110	105x80	56	240	600	KSMG200PCB	KBMG200PCB	KFMG200PCB



Cast Iron

Wheel Dia. (mm)	Tread Width (mm)	Bearing Type	Top Plate (mm)	Bolt Holes (mm)	Offset (mm)	Overall Height (mm)	Load Cap. (kg)	Swivel	Swivel Brake	Fixed
100	50	Roller	135x110	105x80	35	143	350	KSMG100CIB	KBMG100CIB	KFMG100CIB
125	40	Ball	135x110	105x80	39	165	400	KSMG125CIB	KBMG125CIB	KFMG125CIB
150	45	Ball	135x110	105x80	45	190	500	KSMG150CIB	KBMG150CIB	KFMG150CIB
200	45	Ball	135x110	105x80	56	240	600	KSMG200CIB	KBMG200CIB	KFMG200CIB



HK Series

Heavy Duty Fabricated Steel Castor

- Load capacities from 250kg up to 1400kg
- Wheel sizes from 125mm to 300mm
- Robust heavy duty fabricated steel bracket
- Single Ball Race Swivel Head

All available in the following types



White Nylon

Wheel Dia. (mm)	Tread Width (mm)	Bearing Type	Top Plate (mm)	Bolt Holes (mm)	Offset (mm)	Overall Height (mm)	Load Cap. (kg)	Swivel	Swivel Brake	Fixed
125	45	Ball	149x110	120x60 /105x80	45	177	400	HKS12520111	HKB12520111	HKF12520111
150	50	Ball	149x110	120x60 /105x80	49	202	700	HKS15020111	HKB15020111	HKF15020111
200	50	Ball	149x110	120x60 /105x80	54	252	1100	HKS20020111	HKB20020111	HKF20020111
250	50	Ball	149x110	120x60 /105x80	70	303	1300	HKS25025111	HKB25025111	HKF25025111



Elastic Rubber Tyre/Aluminium Centre

Wheel Dia. (mm)	Tread Width (mm)	Bearing Type	Top Plate (mm)	Bolt Holes (mm)	Offset (mm)	Overall Height (mm)	Load Cap. (kg)	Swivel	Swivel Brake	Fixed
125	50	Ball	149x110	120x60 /105x80	45	177	250	HKS12520341	HKB12520341	HKF12520341



Rubber Tyre/Cast Iron Centre

Wheel Dia. (mm)	Tread Width (mm)	Bearing Type	Top Plate (mm)	Bolt Holes (mm)	Offset (mm)	Overall Height (mm)	Load Cap. (kg)	Swivel	Swivel Brake	Fixed
150	50	Ball	149x110	120x60 /105x80	49	202	400	HKS15020341	HKB15020341	HKF15020341
200	50	Ball	149x110	120x60 /105x80	54	252	600	HKS20025341	HKB20025341	HKF20025341
250	54	Ball	149x110	120x60 /105x80	70	303	615	HKS25025341	HKB25025341	HKF25025341
300	54	Ball	149x110	120x60 /105x80	80	353	680	HKS30025341	HKB30025341	HKF30025341



Polyurethane Tyre/Cast Iron Centre

Wheel Dia. (mm)	Tread Width (mm)	Bearing Type	Top Plate (mm)	Bolt Holes (mm)	Offset (mm)	Overall Height (mm)	Load Cap. (kg)	Swivel	Swivel Brake	Fixed
125	50	Ball	149x110	120x60 /105x80	45	177	600	HKS12520241	HKB12520241	HKF12520241
150	50	Ball	149x110	120x60 /105x80	49	202	800	HKS15020241	HKB15020241	HKF15020241
200	50	Ball	149x110	120x60 /105x80	54	252	1000	HKS20020241	HKB20020241	HKF20020241
250	50	Ball	149x110	120x60 /105x80	70	303	1200	HKS25025241	HKB25025241	HKF25025241
300	50	Ball	149x110	120x60 /105x80	80	353	1300	HKS30025241	HKB30025241	HKF30025241



Cast Iron

Wheel Dia. (mm)	Tread Width (mm)	Bearing Type	Top Plate (mm)	Bolt Holes (mm)	Offset (mm)	Overall Height (mm)	Load Cap. (kg)	Swivel	Swivel Brake	Fixed
125	40	Ball	149x110	120x60 /105x80	45	177	500	HKS12520441	HKB12520441	HKF12520441
150	45	Ball	149x110	120x60 /105x80	49	202	600	HKS15020441	HKB15020441	HKF15020441
200	45	Ball	149x110	120x60 /105x80	54	252	1100	HKS20020441	HKB20020441	HKF20020441
250	54	Ball	149x110	120x60 /105x80	70	303	1400	HKS25025441	HKB25025441	HKF25025441



HST Series

Heavy Duty Fabricated Steel Castor

- Heavy Duty Fabricated Range
- Single Ball Bearing Swivel Head
- 4-Way Directional Lock
- Load capacities: 300kg - 950kg

All available in the following types



White Nylon

Wheel Dia. (mm)	Tread Width (mm)	Bearing Type	Swivel Top Plate (mm)	Fixed Top Plate (mm)	Bolt Holes (mm)	Suit Bolt (mm)	Offset (mm)	Overall Height (mm)	Load Cap. (kg)	Swivel	Directional Lock	Swivel Brake	Fixed
100	50	Ball	150x110	150x115	120X60 /105x80	12	52	154	300	HST100NY2B	HST100NY2BD	HBT100NY2B	HFT100NY2B
125	45	Ball	150x110	150x115	120X60 /105x80	12	55	179	425	HST125NY2B	HST125NY2BD	HBT125NY2B	HFT125NY2B
150	50	Ball	150x110	150x115	120X60 /105x80	12	59	204	700	HST150NY2B	HST150NY2BD	HBT150NY2B	HFT150NY2B
200	50	Ball	150x110	150x115	120X60 /105x80	12	62	254	950	HST200NY2B	HST200NY2BD	HBT200NY2B	HFT200NY2B



Rubber Tyre / Cast Iron

Wheel Dia. (mm)	Tread Width (mm)	Bearing Type	Swivel Top Plate (mm)	Fixed Top Plate (mm)	Bolt Holes (mm)	Suit Bolt (mm)	Offset (mm)	Overall Height (mm)	Load Cap. (kg)	Swivel	Directional Lock	Swivel Brake	Fixed
150	50	Ball	150x110	150x115	120X60 /105x80	12	59	204	400	HST150RU2B	HST150RU2BD	HBT150RU2B	HFT150RU2B
200	50	Ball	150x110	150x115	120X60 /105x80	12	62	254	600	HST200RU2B	HST200RU2BD	HBT200RU2B	HFT200RU2B



Polyurethane Tyre/Cast Iron Centre

Wheel Dia. (mm)	Tread Width (mm)	Bearing Type	Swivel Top Plate (mm)	Fixed Top Plate (mm)	Bolt Holes (mm)	Suit Bolt (mm)	Offset (mm)	Overall Height (mm)	Load Cap. (kg)	Swivel	Directional Lock	Swivel Brake	Fixed
100	40	Ball	150x110	150x115	120X60 /105x80	12	52	154	300	HST100PC2B	HST100PC2BD	HBT100PC2B	HFT100PC2B
125	50	Ball	150x110	150x115	120X60 /105x80	12	55	179	425	HST125PC2B	HST125PC2BD	HBT125PC2B	HFT125PC2B
150	50	Ball	150x110	150x115	120X60 /105x80	12	59	204	700	HST150PC2B	HST150PC2BD	HBT150PC2B	HFT150PC2B
200	50	Ball	150x110	150x115	120X60 /105x80	12	62	254	950	HST200PC2B	HST200PC2BD	HBT200PC2B	HFT200PC2B



Cast Iron

Wheel Dia. (mm)	Tread Width (mm)	Bearing Type	Swivel Top Plate (mm)	Fixed Top Plate (mm)	Bolt Holes (mm)	Suit Bolt (mm)	Offset (mm)	Overall Height (mm)	Load Cap. (kg)	Swivel	Directional Lock	Swivel Brake	Fixed
100	40	Ball	150x110	150x115	120X60 /105x80	12	52	154	300	HST100CI2B	HST100CI2BD	HBT100CI2B	HFT100CI2B
125	40	Ball	150x110	150x115	120X60 /105x80	12	55	179	475	HST125CI2B	HST125CI2BD	HBT125CI2B	HFT125CI2B
150	45	Ball	150x110	150x115	120X60 /105x80	12	59	204	800	HST150CI2B	HST150CI2BD	HBT150CI2B	HFT150CI2B
200	45	Ball	150x110	150x115	120X60 /105x80	12	62	254	950	HST200CI2B	HST200CI2BD	HBT200CI2B	HFT200CI2B



GXT Series

Extra Heavy Duty Fabricated Steel Castor

- Heavy Duty Fabricated Castor
- Load Capacities: 500kg - 2700kg
- Power Towable to 4km/h
- Unique integrated axle means superior rolling performance and durability
- Powder Coated and zinc galvanised

All available in the following types



Machine Cast Nylon

Wheel Dia. (mm)	Tread Width (mm)	Bearing Type	Top Plate (mm)	Bolt Holes (mm)	Suit Bolt (mm)	Off-set (mm)	Overall Height (mm)	Load Cap. (kg)	Swivel	Wheel Brake	Fixed
80	48	Ball	100x85	80x60	8	40	120	800	GXT80ASFMC	GXT80BSFMC	GXT80ARFMC
100	48	Ball	100x85	80x60	8	40	140	900	GXT100ASFMC	GXT100BSFMC	GXT100ARFMC
125	70	Ball	175x140	148x111/132x99	14	77.5	170	1500	GXT125ASFMC	GXT125BSFMC	GXT125ARFMC
150	70	Ball	175x140	148x111/132x99	14	80	200	2200	GXT150ASFMC	GXT150BSFMC	GXT150ARFMC
200	70	Ball	175x140	148x111/132x99	14	75	260	2500	GXT200ASFMC	GXT200BSFMC	GXT200ARFMC
250	68	Ball	175x140	148x111/132x99	14	75	310	2700	GXT250ASFMC	GXT250BSFMC	GXT250ARFMC



Polyurethane Tyre / Aluminium Centre

Wheel Dia. (mm)	Tread Width (mm)	Bearing Type	Top Plate (mm)	Bolt Holes (mm)	Suit Bolt (mm)	Off-set (mm)	Overall Height (mm)	Load Cap. (kg)	Swivel	Wheel Brake	Fixed
80	48	Ball	100x85	80x60	8	40	120	500	GXT80ASFHUD	GXT80BSFHUD	GXT80ARFHUD
100	48	Ball	100x85	80x60	8	40	140	600	GXT100ASFHUD	GXT100BSFHUD	GXT100ARFHUD
125	70	Ball	175x140	148x111/132x99	14	77.5	170	1100	GXT125ASFHUD	GXT125BSFHUD	GXT125ARFHUD
150	68	Ball	175x140	148x111/132x99	14	48	224	1500	GXT150ASFHUD	GXT150BSFHUD	GXT150ARFHUD
200	68	Ball	175x140	148x111/132x99	14	60	275	2000	GXT200ASFHUD	GXT200BSFHUD	GXT200ARFHUD
250	64	Ball	175x140	148x111/132x99	14	75	310	2300	GXT250ASFHUD	GXT250BSFHUD	GXT250ARFHUD



UGXT Series

Ultra Heavy Duty Fabricated Steel Castor

- Taper Roller Bearing in Swivel Head
- Load Capacities: 6000kg - 8000kg
- Power Towable to 4km/h
- Unique integrated axle means superior rolling performance and durability
- 4 Ball Bearing in Wheel
- Powder Coated and zinc galvanised

All available in the following types



Machine Cast Nylon

Wheel Dia. (mm)	Tread Width (mm)	Bearing Type	Top Plate (mm)	Bolt Holes (mm)	Suit Bolt (mm)	Offset (mm)	Overall Height (mm)	Load Cap. (kg)	Swivel	Wheel Brake	Fixed
200	100	Ball	255x215	210x160	18	75	280	6000	UGXT200ASFMCQ	UGXT200BSFMCQ	UGXT200ARFMCQ
250	100	Ball	255x215	210x160	18	80	330	7000	UGXT250ASFMCQ	UGXT250BSFMCQ	UGXT250ARFMCQ
300	100	Ball	255x215	210x160	18	90	380	8000	UGXT300ASFMCQ	UGXT300BSFMCQ	UGXT300ARFMCQ

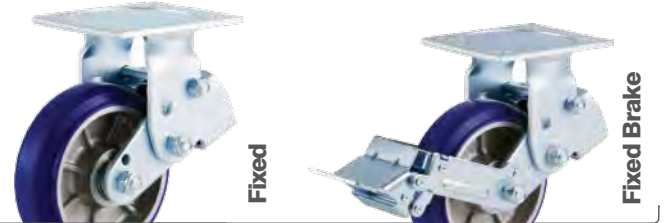
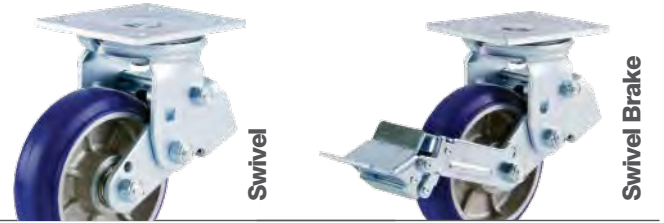


KGDSP Series

Shock Absorbing Castor

- Double cushioned function based on the special rubber cushion
- Power Towable to 20km/h
- Load Capacities: 360kg - 450kg
- Directional Lock is available

All available in the following types



Polyurethane Tyre/Cast Iron Centre

Wheel Dia. (mm)	Tread Width (mm)	Bearing Type	Top Plate (mm)	Bolt Holes (mm)	Suit Bolt (mm)	Offset (mm)	Overall Height (mm)	Compression (mm)	Load Cap. (kg)	Swivel	Swivel Braked	Fixed	Fixed Brake
150	48	Ball	140x110	105x80 / 105x75	10	48~53	202 - 14	14	360	KGDSP150ASFUD	KGDSP150BSFUD	KGDSP150ARFUD	KGDSP150BRFUD
200	48	Ball	140x110	105x80 / 105x75	10	65~75	253 - 15	15	450	KGDSP200ASFUD	KGDSP200BSFUD	KGDSP200ARFUD	KGDSP200BRFUD

KGD Series

Footmaster Levelling Castors

- Mobility, levelling and Vibration Damping
- Die cast aluminium body
- Handwheel, retractable ratchet or spanner operation
- Nylon Wheel

All available in the following types



Top Plate Fitting

Part Num.	Load Capacity (kg)		Wheel Dia. (mm)	Tread Width (mm)	Overall Height (mm)	Offset (mm)	Method of Operation	Bolt Holes (mm)	Top Plate (mm)	Bolt Hole Size (mm)
	Static	Dynamic								
KGDR-40F	60	30	42	20	71+10	30	Handwheel	42x42	55x55	6.5
KGDR-60F*	280	140	50	25	82+10	36	Handwheel	58x58	73x73	7
KGDR-60F-80X80	280	140	50	25	82+10	36	Handwheel	80X80	100X85	7
KGDR-80F	250	125	50	25	82+10	36	Ratchet	58x58	73x73	7
KGDR-80F*	550	275	63	28	103+15	46	Handwheel	70x70	90x90	9
KGDR-100F	500	250	63	28	103+15	46	Ratchet	70x70	90x90	9
KGDR-100F*	800	400	75	30	120+12	53	Handwheel	70x70	95x95	11
KGDR-100F-105X80	800	400	75	30	120+12	53	Handwheel	105X80	140X110	11
KGDR-120F	1000	500	75	30	120+12	52	Handwheel	70x70	95x95	11
KGDR-150F	1500	750	90	55	135+15	69	Handwheel	70x70	100x100	13

Stem Fitting

Part Num.	Load Capacity (kg)		Wheel Dia. (mm)	Tread Width (mm)	Overall Height (mm)	Offset (mm)	Method of Operation	Bolt Holes (mm)	Bolt Hole Size (mm)
	Static	Dynamic							
KGDR-40S	60	30	42	20	71+10	30	Handwheel	M8x1.25P	10
KGDR-60S*	280	140	50	25	82+10	36	Handwheel	M12x1.75P	18
KGDR-80S	250	125	50	25	82+10	36	Ratchet	M12x1.75P	18
KGDR-80S*	550	275	63	28	103+15	46	Handwheel	M12x1.75P	16
KGDR-100S	500	250	63	28	103+15	46	Ratchet	M12x1.75P	16
KGDR-120S	800	400	75	30	120+12	53	Handwheel	M16x2.0P	24
KGDR-150S	1000	500	75	30	120+12	52	Handwheel	M16x2.0P	24

* Available in stainless steel

K2 Series

Extra Heavy Duty Twin Wheel Castor

- Wheel Sizes from 125mm to 300mm
- Load Capacities from 750kg to 4000kg
- Very Heavy Duty Fabricated Bracket
- Taper Roller Bearing in Swivel Head

All available in the following types



Red Polyurethane Tyre/Nylon Centre

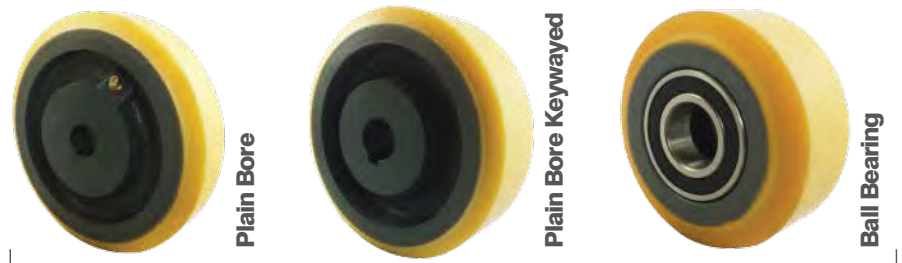
Wheel Dia. (mm)	Tread Width (mm)	Bearing Type	Top Plate (mm)	Bolt Holes (mm)	Offset (mm)	Overall Height (mm)	Load Cap. (kg)	Swivel	Wheel Brake	Fixed
125	40	Ball	170x170	130x130	60	197	750	K2ST125PC2B	K2BT125PC2B	K2FT125PC2B
150	40	Ball	170x170	130x130	60	210	1000	K2ST150PC2B	K2BT150PC2B	K2FT150PC2B
200	50	Ball	200x200	160x160	72	270	2000	K2ST200PC2B	K2BT200PC2B	K2FT200PC2B
250	60	Ball	230x230	190x190	80	320	2800	K2ST250PC2B	K2BT250PC2B	K2FT250PC2B
300	70	Ball	230x230	190x190	83	375	4000	K2ST300PC2B	K2BT300PC2B	K2FT300PC2B

PT Designer Series

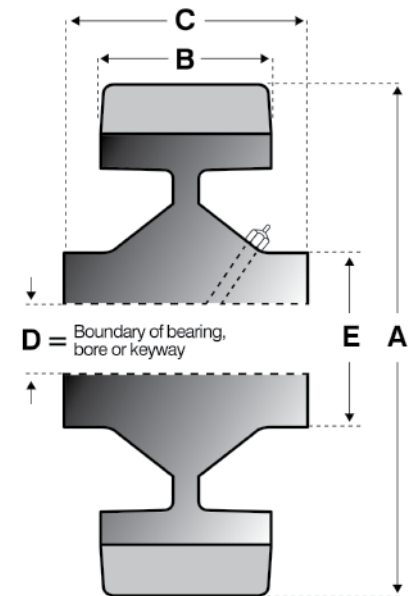
Polyurethane Tyred Wheels

- High Performance Cast Iron Wheels with Quality REVVOTHANE Polyurethane Tyres
- For wheels in conveyor and transportation systems
- High load bearing capacity, minimal build up of heat and high abrasion resistance

All available in the following types



Wheel Dia. (mm)	Tread Width (mm)	Load Capacity (kg)	Axle Bore (mm)	Dimensions (mm)					Part Number		
				A	B	C	D	E	Plain Bore	Plain Bore Keywayed	Ball Bearing
75	35	300	12	75	35	35	48	55	07535PT012	-	07535PT212
	35	300	20	75	35	35	45	55	-	-	07535PT220
100	40	500	12	100	40	45	48	57	10040PT012	-	-
	40	500	20	100	40	45	48	57	10040PT020	-	10040PT220
	40	500	25	100	40	45	48	57	10040PT025	-	10040PT025
125	45	600	25	125	45	50	48	55	12545PT025	-	12545PT225
150	35	700	20	150	35	40	50	60	15035PT020	-	15035PT220
	35	700	25	150	35	40	50	60	-	-	15035PT225
	50	900	20	150	50	55	52	65	-	-	15050PT220
	50	900	25	150	50	55	52	65	15050PT025	15050PTU25	15050PT225
	50	900	30	150	50	55	52	65	15050PT030	-	-
200	40	1000	25	200	40	50	70	80	-	20040PTU25	-
	40	1000	30	200	40	50	70	80	-	20040PTU30	-
	60	1300	30	200	60	70	70	80	20060PT030	-	20060PT230
	60	1300	35	200	60	70	70	80	-	20060PTU35	-
250	45	1200	30	250	45	55	80	100	-	25045PTU30	-
	70	2000	30	250	70	80	80	100	25070PT030	-	-
300	75	2800	30	300	75	85	90	115	30075PT030	-	-
	75	2800	50	300	75	85	90	115	-	30075PTU50	-



PT 'Designer' Series Selection Notes:

*Stated load capacities are for operation under ideal conditions, i.e. the wheel operates infrequently on a smooth surface without axial loading

*Wheel loadings must be reduced as follows for any of the following conditions

Frequent use: In use for more than 45 minutes continuous operation, reduce loadings by 25%

Driving applications: Reduce Loadings by 30%

Speeds 6 - 10kph: Reduce Loadings by 20%

Speeds 10 - 16kph: Reduce Loadings by 30%

Special note: Reductions are cumulative if more than one condition exists

Ball Transfer Units

Flange, Drop in, and, Base Plate Models

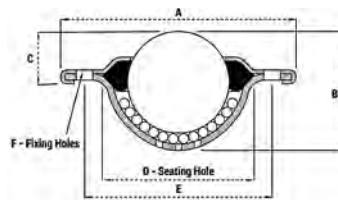
- Chrome Steel Balls as standard: Contact surfaces case hardened for durability
- All types fitted with felt seals to prevent dust getting into small balls
- Dirt exit holes fitted as standard

Flanged “Flying Saucer” Model

Part #	Description	Load Ball Dia. (mm)	A (mm)	B (mm)	C (mm)	D (mm)	E (mm)	F (mm)	Load Capacity
K25BTUFL2	Chrome Steel Load Balls	25.4	73.5	30.5	14.2	40	55.6	5	60 kg
K25BTUFL3	Chrome Steel Load Balls	25.4	73.5	30.5	14.2	40	55.6	5	60 kg
KS25NBTU* [2] or [3]	Nylon Load Ball	25.4	73.5	30.5	14.2	40	55.6	5	25 kg
K32SSBTU* [2] or [3]	Stainless Steel Balls	31.75	73.75	36.75	16.3	47	58.7	5	125kg



K25BTUFL3

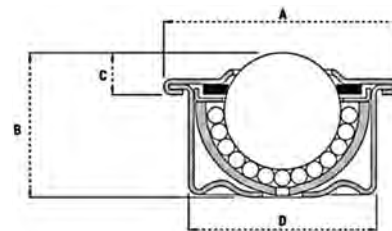


K25BTUFL2

* Add a 2 or 3 to the end of the code to specify 2 or 3-hole fixing.

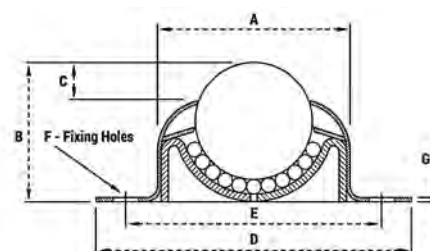
“Drop In” Model

Part #	Description	Load Ball Dia. (mm)	A (mm)	B (mm)	C (mm)	D (mm)	Load Capacity
K15BTU	Chrome Steel Load Balls	15.8	31	21	9.5	24	60 kg
K15NBTU	Nylon Load Ball (Stainless Small Balls)	15.8	31	21	9.5	24	10 kg
K22BTU	Chrome Steel Load Balls	22.2	45.25	27.5	8.2	35.81	160 kg
K22NBTU	Nylon Load Ball (Stainless Small Balls)	22.2	45.25	27.5	8.2	35.81	20 kg



Base Plate Model

Part #	Description	Load Ball Dia. (mm)	A (mm)	B (mm)	C (mm)	D (mm)	E (mm)	F (mm)	G (mm)	Load Capacity
K25BTUBASE2	Chrome Steel Load Balls	25.4	41.8	30.25	8	68.5	55.56	5.5	0.9	55 kg
K25SSBTUBASE2	Stainless Steel Load Balls	25.4	41.8	30.25	8	68.5	55.56	5.5	0.9	55 kg



Midlands: 0121 772 1010
Northern: 0161 865 3800

Web: www.keystonecastors.co.uk
Email: sales@keystonecastors.com

Also available from stock



Adjustable feet and inserts



Furniture Castors



Application Wheels



Pallet Rollers



Gate Castors



Low Level Castors



Truck Locks

so much more. Call us on 0121 772 1010



KEYSTONE
CASTOR COMPANY

Head Office | Unit 1, St Andrews Trading Estate, 111 Great Barr Street, Birmingham, B9 4BB