

KEYSTONE

CASTOR COMPANY

Midlands: 0121 772 1010 | Northern: 0161 865 3800

Web: www.keystonecastors.co.uk | Email: sales@keystonecastors.com

The Essential Castor Catalogue



Flexell 



**The Premier
stockist of the
UK's favourite
Brands**



British Castors Limited

Proud to be the leading Partner

Page #	Series Name	Duty	Description	Fitting Type	Wheel Diameter Range (mm)	Load Capacity Range (kg)
1	55/88 Series	Medium/Heavy	Pressed Steel Castors	Top Plate	150 - 200	400 - 1090
2	61/88 Series	Medium	Pressed Steel Castors	Top Plate	50 - 100	27 - 340
3	61/88 Series	Medium	Pressed Steel Castors	Top Plate	125 - 150	180 - 680
4	22/29 Series	Medium	Pressed Steel Castors	Top Plate	100 - 125	160 - 250
5	22/29 Series	Medium	Pressed Steel Castors	Top Plate	150 - 200	135 - 500
6	Sovereign	Light/Medium	Pressed Steel Castors	Top Plate	100 - 125	85 - 150
7	Sovereign	Light/Medium	Pressed Steel Castors	Bolt Hole	100 - 125	85 - 150
8	H Series	Heavy	Fabricated	Top Plate	100 - 200	150 - 1500
9	H Series	Heavy	Fabricated	Top Plate	250 - 300	615 - 1500
10	EH Series	Extra Heavy	Fabricated	Top Plate	250 - 300	2950 - 4080
11	ISO Tow Castors	Extra Heavy	Fabricated	Top Plate	250 - 300	10 Tonne - 12 Tonne
12	Jacking Castors	Light/Medium/Heavy	Fabricated	Side Mounted	75 - 200	80 - 1090
13	WRN, WPN, WNY	-	Castor Wheels	-	50 - 200	27 - 650
14	WSU	-	Castor Wheels	-	75 - 400	150 - 6120
15	PT Series	-	Castor Wheels	-	50 - 400	80 - 6700
16	PT Designer Series	-	Castor Wheels	-	75 - 300	300 - 2800

- Load capacities are based on normal working conditions and manually propelled at a maximum speed of 4km/h
- Since load capacity ratings are only general recommendations they can be subject to wide variations under different working conditions. It may be necessary to select a castor with a much higher load rating than the actual weight being carried by the castor
- Factors that affect the required load capacity of a castor include (but not limited to):
 - Uneven floor surface
 - Ramps, slopes, cracks, kerbs, potholes
 - Uneven load distribution
- On equipment to be fitted with 4 castors, it's industry standard to recommend that the minimum load capacity required by a castor is calculated using the formula:
 - Load Capacity of Castor = (Load + Weight of Transport Equipment) / 3
- Unless otherwise stated in the catalogue castors cannot be power towed

Can't find what you're looking for?

With **10,000+** products in stock we have the castor for every requirement

To find the right one for you visit

www.keystonecastors.co.uk

Or call technical sales on

0121 772 1010



- All specifications and recommendations are given to the best of our knowledge and ability. No liability is accepted for their application
- Measurements are in millimetres and load ratings are in kilograms unless otherwise stated
- Specifications (by dimension, description, illustration or otherwise) are approximate and are liable to change without notice especially with regard to developments and improvements
- Listing of goods does not necessarily imply that they are 'Ex stock' nor do we accept any obligation to supply them

55 & 88 Series

A medium to heavy duty range of castors with heavy duty brackets, roller ball bearing swivel heads and pressed steel brackets. Suitable for a wide selection of applications, this range has a bright zinc finish.

- Medium to Heavy Duty Range
- Pressed steel bracket with bright zinc finish
- Roller ball bearing swivel head
- Wide selection of wheel types
- Load Capacities of 400 -1090Kg
- Combined swivel and wheel brake on some wheel options
- Swivel radius on braked castors increases to 160mm
- Wheel sizes from 150mm to 200mm



Wheel Dia. (mm)	Tread Width (mm)	Load Cap. (kg)	Overall Height (mm)	Plate / Bolt Hole Dimensions (mm)		Suits Bolt Dia (mm)	Wheel Type	Bearing Type	Swivel Radius (mm)	Catalogue Reference		
				Plate	Hole Ctrs					Swivel	Swivel & Wheel Brake	Fixed
150	45	400	197	S 162 x 140 F 165 x 112	S 140 x 105 F 140 x 73	10	Rubber Tyred Cast Iron	Plain	111	655RT	655RTSWB	688RT
150	45	400	197	S 162 x 140 F 165 x 112	S 140 x 105 F 140 x 73	10	Rubber Tyred Cast Iron	Roller	111	655RTB	655RTBSWB	688RTB
150	45	725	197	S 162 x 140 F 165 x 112	S 140 x 105 F 140 x 73	10	Polyurethane Tyred Cast Iron	Roller	111	655SUB	655SUBSWB	688SUB
150	38	520	197	S 162 x 140 F 165 x 112	S 140 x 105 F 140 x 73	10	Nylon	Plain	111	655NY	655NYSWB	688NY
150	38	520	197	S 162 x 140 F 165 x 112	S 140 x 105 F 140 x 73	10	Nylon	Roller	111	655NYB	655NYBSWB	688NYB
150	45	600	197	S 162 x 140 F 165 x 112	S 140 x 105 F 140 x 73	10	Polyurethane Tyred Nylon	Plain	111	655PN	655PNSWB	688PN
150	45	600	197	S 162 x 140 F 165 x 112	S 140 x 105 F 140 x 73	10	Polyurethane Tyred Nylon	Roller	111	655PNB	655PNBSWB	688PNB
150	45	1020	197	S 162 x 140 F 165 x 112	S 140 x 105 F 140 x 73	10	Cast Iron	Plain	111	655CI	-	688CI
150	45	1020	197	S 162 x 140 F 165 x 112	S 140 x 105 F 140 x 73	10	Cast Iron	Roller	111	655CIB	-	688CIB
200	51	585	246	S 162 x 140 F 165 x 112	S 140 x 105 F 140 x 73	10	Rubber Tyred Cast Iron	Plain	150	855RT	855RTSWB	888RT
200	51	585	246	S 162 x 140 F 165 x 112	S 140 x 105 F 140 x 73	10	Rubber Tyred Cast Iron	Roller	150	855RTB	855RTBSWB	888RTB
200	51	1045	246	S 162 x 140 F 165 x 112	S 140 x 105 F 140 x 73	10	Polyurethane Tyred Cast Iron	Roller	150	855SUB	855SUBSWB	888SUB
200	38	605	246	S 162 x 140 F 165 x 112	S 140 x 105 F 140 x 73	10	Nylon	Plain	150	855NY	855NYSWB	888NY
200	38	605	246	S 162 x 140 F 165 x 112	S 140 x 105 F 140 x 73	10	Nylon	Roller	150	855NYB	855NYBSWB	888NYB
200	50	650	246	S 162 x 140 F 165 x 112	S 140 x 105 F 140 x 73	10	Polyurethane Tyred Nylon	Plain	150	855PN	855PNSWB	888PN
200	50	650	246	S 162 x 140 F 165 x 112	S 140 x 105 F 140 x 73	10	Polyurethane Tyred Nylon	Roller	150	855PNB	855PNBSWB	888PNB
200	45	1090	246	S 162 x 140 F 165 x 112	S 140 x 105 F 140 x 73	10	Cast Iron	Plain	150	855CI	-	888CI
200	45	1090	246	S 162 x 140 F 165 x 112	S 140 x 105 F 140 x 73	10	Cast Iron	Roller	150	855CIB	-	888CIB

Castors with plain bearing type 'NY' wheels are also available with corrosion free wheel tubes for use in wet conditions. Add suffix 'SS' to the catalogue reference when ordering.

Elastic Rubber tyred wheels are also available. Call sales for more information.

An established industry standard range of pressed steel castors offering a wide range of fitting and wheel options. Suitable for most industrial uses.

- Medium Duty Range with bright zinc finish
- Pressed steel bracket with ball bearing swivel head
- Threadguards available on Nylon wheeled castors
- Threaded stem and triangular plate fitting options
- Load Capacities of 27 - 680Kg
- Double ended footbrake option on 100mm sizes
- Swivel radius on braked castors increases by 29mm.
- Wheel sizes from 50mm to 150mm



Wheel Dia. (mm)	Tread Width (mm)	Load Cap. (kg)	Over-all Height (mm)	Plate / Bolt Hole Dimensions (mm)		Suits Bolt Dia (mm)	Wheel Type	Bearing Type	Swivel Radius (mm)	Catalogue Reference		
				Plate	Hole Ctrs					Swivel	Foot Brake	Fixed
50	19	54	64	S 67 x 48 F 67 x 45	54 x 25	6	Nylon	Plain	42	961NY	-	988NY
50	22	27	64	S 67 x 48 F 67 x 45	54 x 25	6	Rubber Tyre / Nylon Centre	Plain	42	961RN	-	988RN
50	22	54	64	S 67 x 48 F 67 x 45	54 x 25	6	Cast Iron	Plain	42	961CI	-	988CI
63	22	122	81	S 95 x 70 F 95 x 59	S 76 x 44.5 F 76 x 35	8	Nylon	Plain	54	261NY	-	288NY
63	25	60	81	S 95 x 70 F 95 x 59	S 76 x 44.5 F 76 x 35	8	Rubber Tyre / Nylon Centre	Plain	54	261RN	-	288RN
63	25	122	81	S 95 x 70 F 95 x 59	S 76 x 44.5 F 76 x 35	8	Cast Iron	Plain	54	261CI	-	288CI
75	29	150	95	S 105 x 80 F 102 x 64	S 80/86 x 60 F 83 x 35	8	Polyurethane Tyre / Cast Iron Centre	Plain	62	361SU	361SUBR	388SU
75	25	170	95	S 105 x 80 F 102 x 64	S 80/86 x 60 F 83 x 35	8	Nylon	Plain	62	361NY	361NYBR	388NY
75	32	90	95	S 105 x 80 F 102 x 64	S 80/86 x 60 F 83 x 35	8	Rubber Tyre / Nylon Centre	Plain	62	361RN	361RNBR	388RN
75	32	170	95	S 105 x 80 F 102 x 64	S 80/86 x 60 F 83 x 35	8	Cast Iron	Plain	62	361CI	361CIBR	388CI
75	38	150	95	S 105 x 80 F 102 x 64	S 80/86 x 60 F 83 x 35	8	Phenolic Resin	Plain	62	361AN	361ANBR	388AN
100	43	295	125	S 128 x 102 F 121 x 80	S 100/105 x 76/80 F 100 x 48	10	Polyurethane Tyre / Cast Iron Centre	Roller	76	461SUB	461SUBBR	488SUB
100	32	270	125	S 128 x 102 F 121 x 80	S 100/105 x 76/80 F 100 x 48	10	Nylon	Plain	76	461NY	461NYBR	488NY
100	32	270	125	S 128 x 102 F 121 x 80	S 100/105 x 76/80 F 100 x 48	10	Nylon	Roller	76	461NYB	461NYBBR	488NYB
100	35	250	125	S 128 x 102 F 121 x 80	S 100/105 x 76/80 F 100 x 48	10	Polyurethane Tyre / Nylon Centre	Plain	76	461PN	461PNBR	488PN
100	35	250	125	S 128 x 102 F 121 x 80	S 100/105 x 76/80 F 100 x 48	10	Polyurethane Tyre / Nylon Centre	Roller	76	461PNB	461PNBBR	488PNB
100	38	160	125	S 128 x 102 F 121 x 80	S 100/105 x 76/80 F 100 x 48	10	Rubber Tyre / Nylon Centre	Plain	76	461RN	461RNBR	488RN
100	38	160	125	S 128 x 102 F 121 x 80	S 100/105 x 76/80 F 100 x 48	10	Rubber Tyre / Nylon Centre	Roller	76	461RNB	461RNBBR	488RNB
100	38	340	125	S 128 x 102 F 121 x 80	S 100/105 x 76/80 F 100 x 48	10	Cast Iron	Plain	76	461CI	461CIBR	488CI
100	38	340	125	S 128 x 102 F 121 x 80	S 100/105 x 76/80 F 100 x 48	10	Cast Iron	Roller	76	461CIB	461CIBBR	488CIB
100	38	305	125	S 128 x 102 F 121 x 80	S 100/105 x 76/80 F 100 x 48	10	Phenolic Resin	Plain	76	461AN	461ANBR	488AN
100	38	305	125	S 128 x 102 F 121 x 80	S 100/105 x 76/80 F 100 x 48	10	Phenolic Resin	Roller	76	461ANB	461ANBBR	488ANB

Threaded Stem & Nut Fitting Available on 63mm and 75mm castors. Stem is M12 x 25mm. Add suffix 'ST' to catalogue reference when ordering.

Triangular Plate Fitting Available on 63 - 100mm castors. Fitting Ctrs 73-102mm on 63/75mm castors, 96-114mm on 100mm castors. Add suffix 'V' to catalogue reference when ordering.

61 & 88 Series

180kg - 680kg / 125mm - 150mm

- Medium Duty Range
- Pressed steel bracket with bright zinc finish
- Ball bearing swivel head
- Wide selection of wheel types
- Load Capacities of 27 -680Kg
- Threadguard options available
- Wide choice of wheel types available in all sizes.
- Wheel sizes from 50mm to 150mm



Wheel Dia. (mm)	Tread Width (mm)	Load Cap. (kg)	Overall Height (mm)	Plate / Bolt Hole Dimensions (mm)		Suits Bolt Dia (mm)	Wheel Type	Bearing Type	Swivel Radius (mm)	Catalogue Reference		
				Plate	Hole Ctrs					Swivel	Foot Brake	Fixed
125	38	180	156	S 162 x 133 F 121 x 80	S 140/120 x 105/95 F 100 x 48	10	Rubber Tyre / Cast Iron Centre	Plain	98	561RT	-	588RT
125	38	180	156	S 162 x 133 F 121 x 80	S 140/120 x 105/95 F 100 x 48	10	Rubber Tyre / Cast Iron Centre	Roller	98	561RTB	-	588RTB
125	35	325	156	S 162 x 133 F 121 x 80	S 140/120 x 105/95 F 100 x 48	10	Polyurethane Tyre / Cast Iron Centre	Roller	98	561SUB	-	588SUB
125	35	365	156	S 162 x 133 F 121 x 80	S 140/120 x 105/95 F 100 x 48	10	Nylon	Plain	98	561NY	-	588NY
125	35	365	156	S 162 x 133 F 121 x 80	S 140/120 x 105/95 F 100 x 48	10	Nylon	Roller	98	561NYB	-	588NYB
125	35	300	156	S 162 x 133 F 121 x 80	S 140/120 x 105/95 F 100 x 48	10	Polyurethane Tyre / Nylon Centre	Plain	98	561PN	-	588PN
125	35	300	156	S 162 x 133 F 121 x 80	S 140/120 x 105/95 F 100 x 48	10	Polyurethane Tyre / Nylon Centre	Roller	98	561PNB	-	588PNB
125	38	180	156	S 162 x 133 F 121 x 80	S 140/120 x 105/95 F 100 x 48	10	Rubber Tyre / Nylon Centre	Plain	98	561RN	-	588RN
125	38	180	156	S 162 x 133 F 121 x 80	S 140/120 x 105/95 F 100 x 48	10	Rubber Tyre / Nylon Centre	Roller	98	561RNB	-	588RNB
125	41	475	156	S 162 x 133 F 121 x 80	S 140/120 x 105/95 F 100 x 48	10	Cast Iron	Plain	98	561CI	-	588CI
125	41	475	156	S 162 x 133 F 121 x 80	S 140/120 x 105/95 F 100 x 48	10	Cast Iron	Roller	98	561CIB	-	588CIB
125	38	395	156	S 162 x 133 F 121 x 80	S 140/120 x 105/95 F 100 x 48	10	Phenolic Resin	Plain	98	561AN	-	588AN
125	38	395	156	S 162 x 133 F 121 x 80	S 140/120 x 105/95 F 100 x 48	10	Phenolic Resin	Roller	98	561ANB	-	588ANB
150	45	400	181	S 162 x 133 F 155 x 113	S 140/120 x 105/95 F 133 x 67	10	Rubber Tyre / Cast Iron Centre	Plain	117	661RT	-	6188RT
150	45	400	181	S 162 x 133 F 155 x 113	S 140/120 x 105/95 F 133 x 67	10	Rubber Tyre / Cast Iron Centre	Roller	117	661RTB	-	6188RTB
150	38	540	181	S 162 x 133 F 155 x 113	S 140/120 x 105/95 F 133 x 67	10	Polyurethane Tyre / Cast Iron Centre	Roller	117	661SUB	-	6188SUB
150	38	520	181	S 162 x 133 F 155 x 113	S 140/120 x 105/95 F 133 x 67	10	Nylon	Plain	117	661NY	-	6188NY
150	38	520	181	S 162 x 133 F 155 x 113	S 140/120 x 105/95 F 133 x 67	10	Nylon	Roller	117	661NYB	-	6188NYB
150	45	600	181	S 162 x 133 F 155 x 113	S 140/120 x 105/95 F 133 x 67	10	Polyurethane Tyre / Nylon Centre	Plain	117	661PN	-	6188PN
150	45	600	181	S 162 x 133 F 155 x 113	S 140/120 x 105/95 F 133 x 67	10	Polyurethane Tyre / Nylon Centre	Roller	117	661PNB	-	6188PNB
150	45	300	181	S 162 x 133 F 155 x 113	S 140/120 x 105/95 F 133 x 67	10	Rubber Tyre / Nylon Centre	Plain	117	661RN	-	6188RN
150	45	300	181	S 162 x 133 F 155 x 113	S 140/120 x 105/95 F 133 x 67	10	Rubber Tyre / Nylon Centre	Roller	117	661RNB	-	6188RNB
150	45	680	181	S 162 x 133 F 155 x 113	S 140/120 x 105/95 F 133 x 67	10	Cast Iron	Plain	117	661CI	-	6188CI
150	45	680	181	S 162 x 133 F 155 x 113	S 140/120 x 105/95 F 133 x 67	10	Cast Iron	Roller	117	661CIB	-	6188CIB
150	51	540	181	S 162 x 133 F 155 x 113	S 140/120 x 105/95 F 133 x 67	10	Phenolic Resin	Plain	117	661AN	-	6188AN
150	51	540	181	S 162 x 133 F 155 x 113	S 140/120 x 105/95 F 133 x 67	10	Phenolic Resin	Roller	117	661ANB	-	6188ANB

A range of adaptable medium duty 100mm and 125mm pressed steel castors in a bright zinc finish. Double ball race heads that offer easy swivel action and durability. The polyurethane tyre, nylon centre configuration with a roller bearing is recommended for most applications and a wide selection of other wheel types makes this range ideal for general industrial uses.

- Medium Duty Range
- Pressed steel bracket with bright zinc finish
- Double ball bearing swivel head
- Wide selection of wheel types
- Load Capacities of 135 -500Kg
- Combined swivel and wheel brake options on all sizes
- Swivel radius increases on braked castors*
- Wheel sizes from 100mm to 200mm



Wheel Dia. (mm)	Tread Width (mm)	Load Cap. (kg)	Over-all Height (mm)	Plate / Bolt Hole Dimensions (mm)		Suits Bolt Dia (mm)	Wheel Type	Bear-ing Type	Swivel Radius (mm)	Catalogue Reference		
				Plate	Hole Ctrs					Swivel	Swivel & Wheel Brake	Fixed
100	43	250	128	S 105 x 86 F 105 x 88	80 x 60	8	Polyurethane Tyre / Cast Iron Centre	Roller	90	422SUB	-	429SUB
100	32	250	128	S 105 x 86 F 105 x 88	80 x 60	8	Nylon	Plain	90	422NY	422NYTSB	429NY
100	32	250	128	S 105 x 86 F 105 x 88	80 x 60	8	Nylon	Roller	90	422NYB	422NYBTSB	429NYB
100	35	250	128	S 105 x 86 F 105 x 88	80 x 60	8	Polyurethane Tyre / Nylon Centre	Plain	90	422PN	422PNTSB	429PN
100	35	250	128	S 105 x 86 F 105 x 88	80 x 60	8	Polyurethane Tyre / Nylon Centre	Roller	90	422PNB	422PNBTSB	429PNB
100	38	160	128	S 105 x 86 F 105 x 88	80 x 60	8	Blue Rubber Tyre / Nylon Centre	Plain	90	422RN	422RNTSB	429RN
100	38	160	128	S 105 x 86 F 105 x 88	80 x 60	8	Blue Rubber Tyre / Nylon Centre	Roller	90	422RNB	422RNBTSB	429RNB
125	38	180	155	S 105 x 86 F 105 x 88	80 x 60	8	Rubber Tyre / Cast Iron Centre	Plain	105	522RT	522RTTSB	529RT
125	38	180	155	S 105 x 86 F 105 x 88	80 x 60	8	Rubber Tyre / Cast Iron Centre	Roller	105	522RTB	522RTBTSB	529RTB
125	35	250	155	S 105 x 86 F 105 x 88	80 x 60	8	Polyurethane Tyre / Cast Iron Centre	Roller	105	522SUB	522SUBTSB	529SUB
125	35	250	155	S 105 x 86 F 105 x 88	80 x 60	8	Nylon	Plain	105	522NY	522NYTSB	529NY
125	35	250	155	S 105 x 86 F 105 x 88	80 x 60	8	Nylon	Roller	105	522NYB	522NYBTSB	529NYB
125	35	250	155	S 105 x 86 F 105 x 88	80 x 60	8	Polyurethane Tyre / Nylon Centre	Plain	105	522PN	522PNTSB	529PN
125	35	250	155	S 105 x 86 F 105 x 88	80 x 60	8	Polyurethane Tyre / Nylon Centre	Roller	105	522PNB	522PNBTSB	529PNB
125	38	180	155	S 105 x 86 F 105 x 88	80 x 60	8	Blue Rubber Tyre / Nylon Centre	Plain	105	522RN	522RNTSB	529RN
125	38	180	155	S 105 x 86 F 105 x 88	80 x 60	8	Blue Rubber Tyre / Nylon Centre	Roller	105	522RNB	522RNBTSB	529RNB

***Swivel Radius Increases On Braked Castors**

Swivel radius increases by 40mm on 100mm castors and by 25mm on 125mm castors.

22 & 29 Series

150mm - 200mm

A range of adaptable medium duty 150mm and 200mm pressed steel castors with double ball race heads and a bright zinc finish. A wide selection of wheel types makes this range ideal for general industrial uses.

- Medium Duty Range
- Pressed steel bracket with bright zinc finish
- Double ball bearing swivel head
- Wide selection of wheel types
- Load Capacities of 135 -500Kg
- Combined swivel and wheel brake options to all sizes
- Swivel radius increases on braked castors*
- Wheel sizes from 100mm to 200mm



Wheel Dia. (mm)	Tread Width (mm)	Load Cap. (kg)	Over-all Height (mm)	Plate / Bolt Hole Dimensions (mm)		Suits Bolt Dia (mm)	Wheel Type	Bearing Type	Swivel Radius (mm)	Catalogue Reference		
				Plate	Hole Ctrs					Swivel	Swivel & Wheel Brake	Fixed
150	38	500	188	S 135 x 110 F 135 x 115	105 x 80/75	10	Polyurethane Tyre / Cast Iron Centre	Roller	128	622SUB	622SUBTSB	629SUB
150	38	500	188	S 135 x 110 F 135 x 115	105 x 80/75	10	Nylon	Plain	128	622NY	622NYTSB	629NY
150	38	500	188	S 135 x 110 F 135 x 115	105 x 80/75	10	Nylon	Roller	128	622NYB	622NYBTSB	629NYB
150	45	500	188	S 135 x 110 F 135 x 115	105 x 80/75	10	Polyurethane Tyre / Nylon Centre	Plain	128	622PN	622PNTSB	629PN
150	45	500	188	S 135 x 110 F 135 x 115	105 x 80/75	10	Polyurethane Tyre / Nylon Centre	Roller	128	622PNB	622PNBTSB	629PNB
150	45	300	188	S 135 x 110 F 135 x 115	105 x 80/75	10	Blue Rubber Tyre / Nylon Centre	Plain	128	622RN	622RNTSB	629RN
150	45	300	188	S 135 x 110 F 135 x 115	105 x 80/75	10	Blue Rubber Tyre / Nylon Centre	Roller	128	622RNB	622RNBTSB	629RNB
150	38	135	188	S 135 x 110 F 135 x 115	105 x 80/75	10	Rubber Tyre / Plastic Centre	Plain	128	622PS	622PSTSB	629PS
150	38	135	188	S 135 x 110 F 135 x 115	105 x 80/75	10	Rubber Tyre / Plastic Centre	Roller	128	622PSB	622PSBTSB	629PSB
200	50	500	238	S 135 x 110 F 135 x 115	105 x 80/75	10	Polyurethane Tyre / Cast Iron Centre	Roller	153	822SUB	822SUBTSB	829SUB
200	38	500	238	S 135 x 110 F 135 x 115	105 x 80/75	10	Nylon	Plain	153	822NY	822NYTSB	829NY
200	38	500	238	S 135 x 110 F 135 x 115	105 x 80/75	10	Nylon	Roller	153	822NYB	822NYBTSB	829NYB
200	50	500	238	S 135 x 110 F 135 x 115	105 x 80/75	10	Polyurethane Tyre / Nylon Centre	Plain	153	822PN	822PNTSB	829PN
200	50	500	238	S 135 x 110 F 135 x 115	105 x 80/75	10	Polyurethane Tyre / Nylon Centre	Roller	153	822PNB	822PNBTSB	829PNB
200	50	450	238	S 135 x 110 F 135 x 115	105 x 80/75	10	Blue Rubber Tyre / Nylon Centre	Plain	153	822RN	822RNTSB	829RN
200	50	450	238	S 135 x 110 F 135 x 115	105 x 80/75	10	Blue Rubber Tyre / Nylon Centre	Roller	153	822RNB	822RNBTSB	829RNB
200	50	205	238	S 135 x 110 F 135 x 115	105 x 80/75	10	Rubber Tyre / Plastic Centre	Plain	153	822PS	822PSTSB	829PS
200	50	205	238	S 135 x 110 F 135 x 115	105 x 80/75	10	Rubber Tyre / Plastic Centre	Roller	153	822PSB	822PSBTSB	829PSB

***Swivel Radius Increases On Braked Castors**

Swivel radius increases by 33mm on 150mm castors and by 12mm on 200mm castors.

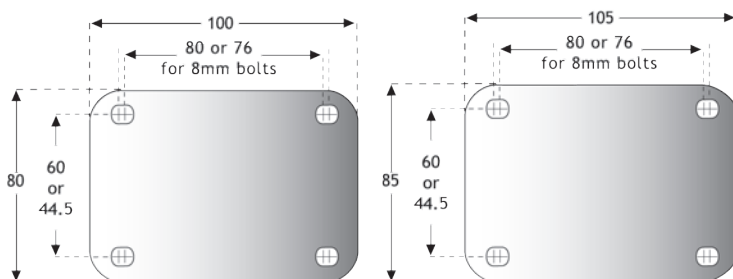


A highly versatile range of pressed steel castors with double ball race swivel heads. Suitable for a wide variety of industrial uses. Load capacities to 150Kg.

- Light to Medium Duty Range
- Pressed steel bracket with zinc finish
- Double ball race swivel head
- Good selection of wheel types
- Load Capacities of 85 - 150Kg
- Industry standard Top plate dimensions
- Combined swivel and wheel brake options
- Wheel sizes of 100mm and 125mm



Wheel Dia. (mm)	Tread Width (mm)	Load Cap. (kg)	Over-all Height (mm)	Plate / Bolt Hole Dimensions (mm)		Suits Bolt Dia (mm)	Wheel Type	Bearing Type	Swivel Radius (mm)	Catalogue Reference		
				Plate	Hole Ctrs					Swivel	Swivel & Wheel Brake	Fixed
100	32	150	128	S 100 x 80 F 105 x 85	80 x 60 or 76 x 44.5	8	Nylon	Plain	110	1321720	1322720	1321950
100	32	150	128	S 100 x 80 F 105 x 85	80 x 60 or 76 x 44.5	8	Nylon	Ball Bearing	110	1321728	1322728	1321958
100	32	150	128	S 100 x 80 F 105 x 85	80 x 60 or 76 x 44.5	8	Red Polyurethane Tyre / Grey Nylon Centre	Roller	110	1321726	1322726	1321986
100	32	150	128	S 100 x 80 F 105 x 85	80 x 60 or 76 x 44.5	8	Blue Elastic Rubber Tyre / Black Nylon Centre	Ball Bearing	110	1321768	1322768	1321968
100	30	85	128	S 100 x 80 F 105 x 85	80 x 60 or 76 x 44.5	8	Grey Rubber Tyre / Black Nylon Centre	Plain	110	1321740	1322740	1321970
100	30	85	128	S 100 x 80 F 105 x 85	80 x 60 or 76 x 44.5	8	Grey Rubber Tyre / Black Nylon Centre	Roller	110	1321750	1322750	1321980
125	32	150	152	S 100 x 80 F 105 x 85	80 x 60 or 76 x 44.5	8	Nylon	Plain	110	1321010	1322010	1321430
125	32	150	152	S 100 x 80 F 105 x 85	80 x 60 or 76 x 44.5	8	Nylon	Ball Bearing	110	1321028	1322028	1321428
125	35	150	152	S 100 x 80 F 105 x 85	80 x 60 or 76 x 44.5	8	Red Polyurethane Tyre / Grey Nylon Centre	Ball Bearing	110	1321038	1322038	1321448
125	35	150	152	S 100 x 80 F 105 x 85	80 x 60 or 76 x 44.5	8	Blue Elastic Rubber Tyre / Black Nylon Centre	Ball Bearing	110	1321068	1322068	1321468
125	30	85	152	S 100 x 80 F 105 x 85	80 x 60 or 76 x 44.5	8	Grey Rubber Tyre / Black Nylon Centre	Ball Bearing	110	1321053	1322053	1321462



Sovereign Series

Bolt Hole



British Castors Limited

A highly versatile range of pressed steel castors with double ball race swivel heads. Suitable for a wide variety of industrial uses. Load capacities to 150Kg.

- Light to Medium Duty Range
- Pressed steel bracket with zinc finish
- Double ball race swivel head
- Good selection of wheel types
- Load Capacities of 85 - 150Kg
- Good range of expander fittings available
- Combined swivel and wheel brake options
- Wheel sizes of 100mm and 125mm



Wheel Dia. (mm)	Tread Width (mm)	Load Cap. (kg)	Over-all Height (mm)	Suits Fitting Bolt Dia. (mm)	Wheel Type	Bearing Type	Swivel Radius (mm)	Catalogue Reference		
								Swivel	Swivel & Wheel Brake	Fixed
100	32	150	128	10	Nylon	Plain	110	1321780	1322780	-
100	32	150	128	10	Nylon	Ball Bearing	110	1321788	1322788	-
100	32	150	128	10	Red Polyurethane Tyre / Grey Nylon Centre	Roller	110	1321786	1322786	-
100	32	150	128	10	Blue Elastic Rubber Tyre / Black Nylon Centre	Ball Bearing	110	1321828	1322828	-
100	30	85	128	10	Grey Rubber Tyre / Black Nylon Centre	Plain	110	1321800	1322800	-
100	30	85	128	10	Grey Rubber Tyre / Black Nylon Centre	Roller	110	1321810	1322810	-
125	32	150	152	10	Nylon	Plain	110	1321070	1322070	-
125	32	150	152	10	Nylon	Ball Bearing	110	1321108	1322108	-
125	35	150	152	10	Red Polyurethane Tyre / Grey Nylon Centre	Ball Bearing	110	1321088	1322088	-
125	35	150	152	10	Blue Elastic Rubber Tyre / Black Nylon Centre	Ball Bearing	110	1321118	1322118	-
125	30	85	152	10	Grey Rubber Tyre / Black Nylon Centre	Ball Bearing	110	1321104	1322104	-



Square Expander

Combined Swivel & Wheel Locks
Available on all sizes in the range.



Round Expander

Expanding Plug Fittings
This range of Nylon fittings allow castors to be mounted to hollow tube constructed equipment or furniture. Available loose or factory fitted to your choice of castor.

Tube Size (Internal mm)		Catalogue Reference	
Min	Max	Round	Square
19	21.5	WR07 19/21.5	-
21.5	24	WR07 21.5/24	WR47 21.5/24
24	27	WR07 24/27	WR47 24/27
27	30	WR07 27/30	WR47 27/30
31	35	R07 31/35	-
31	35	-	R47 32/35
36	40	-	R47 36/40



(TSH & TFH) H Series

Single Wheel 100mm to 200mm

A well established range of heavy gauge forged steel castors with hardened ball race swivel heads that serve as both thrust and radial bearings. Supplied with nylon seals and hydraulic grease nipple for ease of maintenance. The closed base of the swivel ring prevents downward escape of lubricant and completes grease reservoir. Sideplates are press formed to a cylindrical shape to give the best strength to weight ration and are continuously welded to the swivel ring. Load capacities to 1500Kg.

- Heavy Duty Range
- Heavy duty forged steel bracket
- Hardened ball race swivel ring head
- Wide selection of wheel types
- Load Capacities of 150 - 1500Kg
- 4 Station Retro Fit directional lock
- Wheel or Combined brake options to most sizes
- Wheel sizes from 100mm to 200mm



Wheel Dia. (mm)	Tread Width (mm)	Load Cap. (kg)	Overall Height (mm)	Plate / Bolt Hole Dimensions (mm)		Suits Bolt Dia (mm)	Wheel Type	Bearing Type	Swivel Radius (mm)	Catalogue Reference			
				Plate	Hole Ctrs					Swivel	Directional Wheel Lock	Swivel & Wheel Brake	Fixed
100	38	150	152	S 150 x 110 F 150 x 115	105 x 80/75	10	Rubber Tyre / Cast Iron Centre	Roller	102	TSH100RU1H	TSH100RU1HD	-	TFH100RU1H
100	38	340	152	S 150 x 110 F 150 x 115	105 x 80/75	10	Polyurethane Tyre / Cast Iron Centre	Roller	102	TSH100PT1H	TSH100PT1HD	-	TFH100PT1H
100	45	320	152	S 150 x 110 F 150 x 115	105 x 80/75	10	Cast Iron	Roller	102	TSH100CI1H	TSH100CI1HD	-	TFH100CI1H
125	40	170	177	S 150 x 110 F 150 x 115	105 x 80/75	10	Rubber Tyre / Cast Iron Centre	Roller	118	TSH125RU1H	TSH125RU1HD	TSH125RU1HF	TFH125RU1H
125	42	200	177	S 150 x 110 F 150 x 115	105 x 80/75	10	Elastic Rubber Tyre / Aluminium Centre	Ball Journal	118	TSH125GR2H	TSH125GR2HD	TSH125GR2HF	TFH125GR2H
125	38	320	177	S 150 x 110 F 150 x 115	105 x 80/75	10	Polyurethane Tyre / Cast Iron Centre	Roller	118	TSH125PT1H	TSH125PT1HD	TSH125PT1HF	TFH125PT1H
125	45	630	177	S 150 x 110 F 150 x 115	105 x 80/75	10	Cast Iron	Roller	118	TSH125CI1H	TSH125CI1HD	TSH125CI1HF	TFH125CI1H
150	45	370	202	S 150 x 110 F 150 x 115	105 x 80/75	10	Rubber Tyre / Cast Iron Centre	Roller	134	TSH150RU15	TSH150RU15D	TSH150RU15F	TFH150RU15
150	45	370	202	S 150 x 110 F 150 x 115	105 x 80/75	10	Rubber Tyre / Cast Iron Centre	Ball Journal	134	TSH150RU2H	TSH150RU2HD	TSH150RU2HF	TFH150RU2H
150	50	800	202	S 150 x 110 F 150 x 115	105 x 80/75	10	Nylon	Ball Journal	134	TSH150NY2H	TSH150NY2HD	TSH150NY2HF	TFH150NY2H
150	38	730	202	S 150 x 110 F 150 x 115	105 x 80/75	10	Polyurethane Tyre / Cast Iron Centre	Roller	134	TSH150PT15	TSH150PT15D	TSH150PT15F	TFH150PT15
150	38	730	202	S 150 x 110 F 150 x 115	105 x 80/75	10	Polyurethane Tyre / Cast Iron Centre	Ball Journal	134	TSH150PT2H	TSH150PT2HD	TSH150PT2HF	TFH150PT2H
150	45	910	202	S 150 x 110 F 150 x 115	105 x 80/75	10	Cast Iron	Roller	134	TSH150CI15	TSH150CI15D	TSH150CI15F	TFH150CI15
150	45	910	202	S 150 x 110 F 150 x 115	105 x 80/75	10	Cast Iron	Ball Journal	134	TSH150CI2H	TSH150CI2HD	TSH150CI2HF	TFH150CI2H
150	50	1130	202	S 150 x 110 F 150 x 115	105 x 80/75	10	Steel	Ball Journal	134	TSH150ST2H	TSH150ST2HD	TSH150ST2HF	TFH150ST2H
160	42	300	207	S 150 x 110 F 150 x 115	105 x 80/75	10	Elastic Rubber Tyre / Aluminium Centre	Ball Journal	139	TSH160GR2H	TSH160GR2HD	TSH160GR2HF	TFH160GR2H
200	42	400	252	S 150 x 110 F 150 x 115	105 x 80/75	10	Elastic Rubber Tyre / Aluminium Centre	Ball Journal	166	TSH200GR2H	TSH200GR2HD	TSH200GR2HF	TFH200GR2H
200	50	535	252	S 150 x 110 F 150 x 115	105 x 80/75	10	Rubber Tyre / Cast Iron Centre	Roller	166	TSH200RU15	TSH200RU15D	TSH200RU15F	TFH200RU15
200	50	535	252	S 150 x 110 F 150 x 115	105 x 80/75	10	Rubber Tyre / Cast Iron Centre	Ball Journal	166	TSH200RU2H	TSH200RU2HD	TSH200RU2HF	TFH200RU2H
200	50	1500	252	S 150 x 110 F 150 x 115	105 x 80/75	10	Nylon	Ball Journal	166	TSH200NY2H	TSH200NY2HD	TSH200NY2HF	TFH200NY2H
200	45	1100	252	S 150 x 110 F 150 x 115	105 x 80/75	10	Polyurethane Tyre / Cast Iron Centre	Roller	166	TSH200PT15	TSH200PT15D	TSH200PT15F	TFH200PT15
200	45	1100	252	S 150 x 110 F 150 x 115	105 x 80/75	10	Polyurethane Tyre / Cast Iron Centre	Ball Journal	166	TSH200PT2H	TSH200PT2HD	TSH200PT2HF	TFH200PT2H
200	45	1150	252	S 150 x 110 F 150 x 115	105 x 80/75	10	Cast Iron	Roller	166	TSH200CI15	TSH200CI15D	TSH200CI15F	TFH200CI15
200	45	1150	252	S 150 x 110 F 150 x 115	105 x 80/75	10	Cast Iron	Ball Journal	166	TSH200CI2H	TSH200CI2HD	TSH200CI2HF	TFH200CI2H

Nylon Swivel Seal

Supplied as standard on all single wheel swivel castors in the TSH range. A metal swivel seal for uses in temperatures over 60°C is available by special request. Add the suffix Z to the Catalogue reference when ordering.

(TSH & TFH) H Series

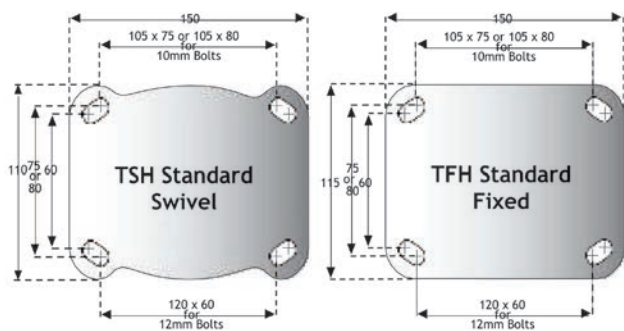
Single Wheel 250mm to 300mm



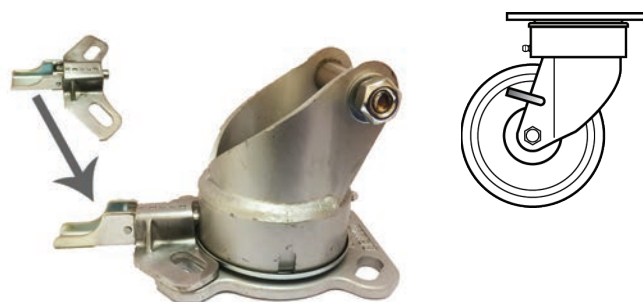
- Heavy Duty Range
- Heavy duty forged steel bracket
- Hardened ball race swivel ring head
- Wide selection of wheel types
- Load Capacities 615 – 1500kg
- Retro Fit Directional Lock option
- Wheel or Combined brake options to most sizes
- Wheel sizes from 250mm to 300mm



Wheel Dia. (mm)	Tread Width (mm)	Load Cap. (kg)	Overall Height (mm)	Plate / Bolt Hole Dimensions (mm)		Suits Bolt Dia (mm)	Wheel Type	Bearing Type	Swivel Radius (mm)	Catalogue Reference	
				Plate	Hole Ctrs					Swivel	Fixed
250	54	615	303	S 150 x 110 F 150 x 115	105 x 80/75	10	Rubber Tyre / Cast Iron Centre	Roller	207	TSH250RU1H	TFH250RU1H
250	54	615	303	S 150 x 110 F 150 x 115	105 x 80/75	10	Rubber Tyre / Cast Iron Centre	Ball Journal	207	TSH250RU2H	TFH250RU2H
250	60	1500	303	S 150 x 110 F 150 x 115	105 x 80/75	10	Nylon	Ball Journal	207	TSH250NY2H	TFH250NY2H
250	45	1200	303	S 150 x 110 F 150 x 115	105 x 80/75	10	Polyurethane Tyre / Cast Iron Centre	Roller	207	TSH250PT1H	TFH250PT1H
250	45	1200	303	S 150 x 110 F 150 x 115	105 x 80/75	10	Polyurethane Tyre / Cast Iron Centre	Ball Journal	207	TSH250PT2H	TFH250PT2H
250	54	1240	303	S 150 x 110 F 150 x 115	105 x 80/75	10	Cast Iron	Roller	207	TSH250CI1H	TFH250CI1H
250	54	1240	303	S 150 x 110 F 150 x 115	105 x 80/75	10	Cast Iron	Ball Journal	207	TSH250CI2H	TFH250CI2H
300	54	680	353	S 150 x 110 F 150 x 115	105 x 80/75	10	Rubber Tyre / Cast Iron Centre	Roller	245	TSH300RU1H	TFH300RU1H
300	54	680	353	S 150 x 110 F 150 x 115	105 x 80/75	10	Rubber Tyre / Cast Iron Centre	Ball Journal	245	TSH300RU2H	TFH300RU2H
300	45	1400	353	S 150 x 110 F 150 x 115	105 x 80/75	10	Polyurethane Tyre / Cast Iron Centre	Roller	245	TSH300PT1H	TFH300PT1H
300	45	1400	353	S 150 x 110 F 150 x 115	105 x 80/75	10	Polyurethane Tyre / Cast Iron Centre	Ball Journal	245	TSH300PT2H	TFH300PT2H



Standard Top plate
Supplied as standard unless alternatives are specified.



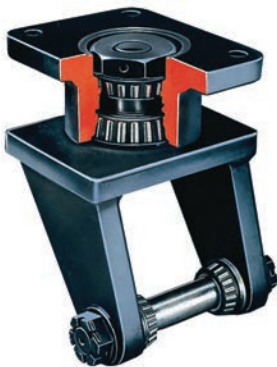
Wheel Lock
Available on all 100mm – 200mm swivel castors in the TSH range. A simple hand operated parking lock. To order add suffix W to the Catalogue reference.

An extra Heavy-duty range of tapered roller bearing swivel and matching fixed castors.

- Extra Heavy-Duty Range
- Fabricated forged steel bracket with black electrostatic finish
- Double Taper roller bearing swivel head
- Tyre options available on Cast Iron centres
- Load Capacities of 2950-4080Kg
- Fully regreasable via grease nipple in swivel head.
- Suitable for power towing



Wheel Dia. (mm)	Tread Width (mm)	Load Cap. (kg)	Overall Height (mm)	Plate / Bolt Hole Dimensions (mm)		Suits Bolt Dia (mm)	Wheel Type	Bearing Type	Swivel Radius (mm)	Catalogue Reference	
				Plate	Hole Ctrs					Swivel	Fixed
2 to 4 Tonnes Load Capacity											
250	76	2950	368	178 x 153	127 x 102	16	Polyurethane Tyre / Cast Iron Centre	Taper Roller	197	EH210SUTM	EHF210SUTM
300	102	4080	422	S 178 x 153 F 178 x 184	127 x 102	16	Polyurethane Tyre / Cast Iron Centre	Taper Roller	222	EH312SUTM	EHF312SUTM



EH Bracket

Tapered roller bearings in both swivel heads and axles of the forged steel, powder coated brackets mean this range are suitable for very heavy applications and power towing.

With **10,000+** products in stock we have the castor for every requirement

To find the right one for you visit

www.keystonecastors.co.uk

Or call technical sales on

0121 772 1010



- All specifications and recommendations are given to the best of our knowledge and ability. No liability is accepted for their application
- Measurements are in millimetres and load ratings are in kilograms unless otherwise stated
- Specifications (by dimension, description, illustration or otherwise) are approximate and are liable to change without notice especially with regard to developments and improvements
- Listing of goods does not necessarily imply that they are 'Ex stock' nor do we accept any obligation to supply them

ISO Tow Castors

Up to 12 tonnes Gross Weight

The ISO Towcastors enable ISO Freight Containers to be moved quickly and easily without the use of expensive equipment.

Using the Extra Heavy Duty EH Series Castor, the kit consists of the items shown below:



**TOWCASTOR
(SWIVEL SHOWN)**

2 off Swivel Towcastor
2 off Fixed Towcastor



LOCKING SCREW

Quantity = 4



LIFTING HANDLE

Quantity = 1



RATCHET SPANNER

Quantity = 1

Description	Wheel Diameter (mm)	Tread Width (mm)	Mounting Height (mm)	Load Capacity	Part Number
10 Tonne Set	250	76	400	10 Tonne	ISO-210SUTM
12 Tonne Set	300	102	454	12 Tonne	ISO-312SUTM



The Key Range Compact Catalogue

Order yours TODAY on:

0121 772 1010

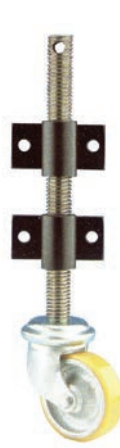
All the Key Range Castors you need in one place

Jacking Castors offer a quick and accurate solution where vertical movement of working platforms or machines is required. Lifts achievable from 75mm to 150mm. Load capacities from 80kg to 1090kg.

IMPORTANT INFORMATION

When adjusting units fitted with multiple jacking castors it is **essential that they are all adjusted simultaneously** so that an even load distribution is maintained. Failure to do this may result in significant damage to the jacking castors and the units to which they are fitted.

Because of this action, the recommended load capacity of the jacking castor is the total weight being carried + Weight of transport unit divided by 2.



KJA Light Duty



KJA Medium Duty



JA Heavy Duty

Wheel Dia. (mm)	Overall Height (mm)	Swivel Radius (mm)	Tread Width (mm)	Bolt Hole Ctrs (mm)	Suits Bolt Dia. (mm)	Height to Lower Bolt when Extended (mm)	Bearing Type	Catalogue Reference			
								Nylon	Cast Iron	Rubber Tyred Cast Iron	Poly. Tyred Cast Iron
Light Duty - 100mm Lift											
75 3"	419	73	NY=35 CI=34 RT=32 SU=25	75	12	238	Plain	KJA3NY 160Kkg	KJA3CI 160kg	KJA3RT 80kg	KJA3SU 160kg
100 4"	444	91	NY=35 CI=38 RT=35 SU=29	75	12	264	Plain	KJA4NY 160kg	KJA4CI 160kg	KJA4RT 135kg	KJA4SU 160kg
125 5"	469	105	NY=35 CI=38 RT=38 SU=32	75	12	290	Plain	KJA5NY 160kg	KJA5CI 160kg	KJA5RT 160kg	KJA5SU 160kg
Medium Duty - 75mm Lift											
150 6"	518	129	NY=40 CI=45 RT=45 SU=38	114.3 X 63.5	12	305	Plain	KJA150NY 230kg	KJA150CI 230kg	KJA150RT 230kg	KJA150SU 230kg
200 8"	562	154	NY=50 CI=45 RT=50 SU=45	114.3 X 63.5	12	349	Plain	KJA200NY 230kg	KJA200CI 230kg	KJA200RT 230kg	KJA200SU 230kg
Heavy Duty - JA - 75mm Lift XJP - 80mm Lift											
150 6"	556	135	45	114.3 X 63.5	12	291	Roller	n/a	JA6CIB 1020kg	JA6RTB 400kg	JA6SUB 725kg
200 8"	607	160	51	114.3 X 63.5	12	342	Roller	n/a	JA8CIB 1090kg	JA8RTB 585kg	JA8SUB 1045kg



KMJ Jacking Castor

Wheel Dia. (mm)	Overall Height (mm)	Swivel Radius (mm)	Tread Width (mm)	Bolt Hole Ctrs (mm)	Suits Bolt Dia. (mm)	Height to Lower Bolt when Extended (mm)	Bearing Type	Wheel Material	Catalogue Reference
Light Duty - 75mm Lift									
75 3"	419	73	35	75	12	238	Plain	Nylon	KMJ4NY Load Cap. = 160kg
100 4"	444	91	29	75	12	264	Plain	Poly Tyred / Cast Iron Centre	KMJ4SU Load Cap. = 160kg

Flexello Wheels

WRN, WPN and WNY Series



Ranges of nylon and rubber and polyurethane tyred wheels suitable for a vast variety of industrial uses.



WRN Series Heavy Duty
Blue elastic rubber non-marking tyre, black nylon centre. Suitable for castor series: 22/29, 61/88.

Wheel Dia. (mm)	Tread Width (mm)	Bore Size (mm)	Hub Length (mm)	Load Cap. (kg)	Bearing Type	Catalogue Reference	USED IN CASTOR SERIES
50	22	6.4	27	27	Plain	WRN20	61
63	25	9.5	33	45	Plain	WRN25	61
75	32	12	40	90	Plain	WRN3M12	61
100	38	15	48	160	Plain	WRN4M15	61, 22
100	38	15	48	160	Roller	WRN4RBM15	61, 22
125	38	15	48	180	Plain	WRN5M15	61, 22
125	38	15	48	180	Roller	WRN5RBM15	61, 22
150	45	20	60	300	Plain	WRN6M20	61, 22
150	45	20	60	300	Roller	WRN6RBM20	61, 22
200	50	20	60	450	Plain	WRN8M20	22
200	50	20	60	450	Roller	WRN8RBM20	22



WPN Series Heavy Duty
Red polyurethane tyre, grey nylon centre.

Wheel Dia. (mm)	Tread Width (mm)	Bore Size (mm)	Hub Length (mm)	Load Cap. (kg)	Bearing Type	Catalogue Reference	USED IN CASTOR SERIES
100	35	12	40	160	Roller	WPN41RBM12	-
100	35	15	48	250	Plain	WPN4M15	61, 22
100	35	15	48	250	Roller	WPN4RBM15	61, 22
125	35	12	40	180	Roller	WPN51RBM12	-
125	35	15	48	300	Plain	WPN5M15	61, 22
125	35	15	48	300	Roller	WPN5RBM15	61, 22
150	45	20	60	600	Roller	WPN6RBM20	61, 22, SL
150	45	12	61	600	Ball Journal	WPN6BJM12	22
150	45	20	57	600	Ball Journal	WPN6BJM20	-
150	45	25	57	600	Ball Journal	WPN6BJM25	-
200	50	20	60	650	Plain	WPN8M20	22, SL
200	50	20	60	650	Roller	WPN8RBM20	22, SL
200	50	12	61	650	Ball Journal	WPN8BJM12	22
200	50	20	57	650	Ball Journal	WPN8BJM20	-
200	50	25	57	650	Ball Journal	WPN8BJM25	-



WNY Series Medium & Heavy Duty
White Nylon wheels.

Wheel Dia. (mm)	Tread Width (mm)	Bore Size (mm)	Hub Length (mm)	Load Cap. (kg)	Bearing Type	Catalogue Reference	USED IN CASTOR SERIES
50	19	6.4	27	54	Plain	WNY20	-
63	22	9.5	33	122	Plain	WNY25	61
75	25	12	40	170	Plain	WNY3M12	61
100	32	15	48	270	Plain	WNY4M15	SL, 61, 22
100	32	15	48	270	Roller	WNY4RBM15	SL, 61, 22
125	35	15	48	360	Plain	WNY5M15	SL, 61, 22
125	35	15	48	360	Roller	WNY5RBM15	SL, 61, 22
150	38	20	60	520	Plain	WNY6M20	GT, SL, 55, 61, 22
150	38	20	60	520	Roller	WNY6RBM20	GT, SL, 55, 61, 22
150	38	25.4	60	520	Plain	WNY6L	-
200	38	20	60	605	Plain	WNY8M20	GT, SL, 55, 22
200	38	20	60	605	Roller	WNY8RBM20	GT, SL, 55, 22
200	38	25.4	60	605	Plain	WNY8L	-

Flexello Superthane polyurethane wheels combine the load capacity and wear resistance of cast iron with all the advantages of a soft resilient tread. High load capacity is coupled with a comparatively low tractive resistance.

The tear strength is two to five times greater than that of natural rubber and the high abrasion resistance ensures a usable life 10 times that of rubber.



WSU Series Heavy Duty wheels with Roller and Taper Roller Bearings
Red polyurethane tyre, red cast iron centre.

IMPORTANT INFORMATION

* These wheels are fitted with taper roller bearings for use in KV, KVF (and possibly GT and GTF) castors and have axle tubes to reduce the bore from the 3/4" of the inner component of the taper roller bearing to the 12mm diameter of the high tensile axle bolt used on all KV and KVF series castors.

The axle tubes are threaded at each end and fitted with thin adjusting nuts, which are screwed up finger tight during manufacture. When fitting these wheels into castors it is vitally important that the adjusting nuts are "backed off" slightly to the point when, with the 12mm HT bolt fully tightened, the wheel has just perceptible sideways 'play'. Until the knack of correct adjustment is acquired it may take several steps to achieve the correct amount of 'play'.

NB. Wheels with a suffix TM which are not identified with an * are for use in EH and EHF series castors. They are supplied with taper roller bearing cups ready fitted, and with the cones, seals and washers loose. It is vitally important to provide means of fine bearing adjustment to give just perceptible sideways 'play'. 'Preload' or excessive clearance will inevitably result in bearing failure.

As these wheels are designed for use on axles supported in castor forks both ends, they will not be able to carry their full rated weights if they are mounted on cantilever axles.

Wheel Dia. (mm)	Tread Width (mm)	Bore Size (mm)	Hub Length (mm)	Load Cap. (kg)	Bearing Type	Catalogue Reference	USED IN CASTOR SERIES
75	29	12	39	150	Plain	WSU3M12	61
100	43	15	48	295	Roller	WSU4RBM15	SL, 61, 22
125	35	15	48	325	Roller	WSU5RBM15	SL, 61, 22
150	38	20	60	600	Roller	WSU61RBM20	SL, 61, 22
150	45	20	60	725	Roller	WSU6RBM20	KV, GT, JA, 55
150	45	12.7	62	725	Taper Roller	WSU6TM*	KV, GT, JA
150	45	25	60	725	Roller	WSU6RBM25	-
150	45	25.4	60	725	Roller	WSU6LRB	-
200	51	20	60	1045	Roller	WSU8RBM20	KV, GT, SL, JA, 55
200	51	12.7	62	1045	Taper Roller	WSU8TM*	KV, GT, JA
200	51	25	60	1045	Roller	WSU8RBM25	-
200	51	25.4	60	1045	Roller	WSU8LRB	-
200	76	12.7	106	1270	Taper Roller	WSU83TM*	KV
200	76	19.1	92	1270	Taper Roller	WSU108TM	EH
250	51	12.7	62	1135	Taper Roller	WSU10TM*	KV, GT
250	51	25	60	1135	Roller	WSU10RBM25	KV, GT
250	51	25.4	60	1135	Roller	WSU10RB	-
250	51	31.8	60	1135	Roller	WSU10LRB	-
250	76	12.7	106	2270	Taper Roller	WSU103TM*	KV
250	76	19.1	92	2270	Taper Roller	WSU110TM	EH
250	76	31.8	92	2950	Taper Roller	WSU210TM	EH
300	57	25	60	1270	Roller	WSU12RBM25	KV
300	57	25.4	60	1270	Roller	WSU12RB	-
300	57	31.8	60	1270	Roller	WSU12LRB	-
300	76	31.8	92	2950	Taper Roller	WSU212TM	EH
300	76	38.1	95	2950	Roller	WSU212RB	-
300	102	31.8	118	4080	Taper Roller	WSU312TM	EH
400	127	34.9	143	6120	Taper Roller	WSU516TM	EH

Conversion mm/ins: 12.7=1/2, 19.1=3/4, 25.4= 1, 31.8=11/4, 38.1=11/2, 34.9=13/8.

Wheel Dia. (mm)	Tread Width (mm)	Bore Size (mm)	Hub Length (mm)	Load Cap. (kg)	Bearing Type	Catalogue Reference	USED IN CASTOR SERIES
150	45	12	61	725	Ball Journal	WSU6BJM12	SL, GT, KV
150	45	20	57	725	Ball Journal	WSU6BJM20	-
200	51	12	61	1045	Ball Journal	WSU8BJM12	SL, GT, KV
200	51	20	57	1045	Ball Journal	WSU8BJM20	-
200	51	25	57	1045	Ball Journal	WSU8BJM25	-
200	76	25	92	1270	Ball Journal	WSU83BJM25	-
250	51	25	57	1135	Ball Journal	WSU10BJM25	-
300	57	12	61	1270	Ball Journal	WSU12BJM12	KV
300	57	25	57	1270	Ball Journal	WSU12BJM25	-

PT Series Wheels



A range of Polyurethane and Rewothane Polyurethane tyred wheels. These tyres have a high tear strength, exceptional abrasion resistance and are have a useful life of up to ten times that of equivalent rubber tyred heels under similar conditions and load.



Load capacities are up to three times that of similar rubber tyred wheels, which means that smaller diameter wheels can be used if required. Rewothane tyred wheels also offer excellent recovery from long periods of heavy static loading combined with low rolling resistance and floor saving.

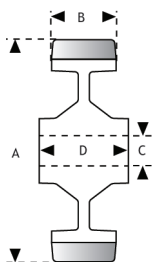
Resistant to a wide range of oils, greases and chemicals, Rewothane Polyurethane is used on 150mm sized wheels and above and performs satisfactorily between -30°C and +80°C under normal conditions.

Polyurethanes are sensitive to hydrolysing agents such as hot water, steam and hot moist air, strong acids and alcohols

When fitting these wheels into brackets of the castor ranges indicated above, the load capacity of the complete castor must be downrated to the maximum rating shown in either the castor range assembly table, or that of the wheel, whichever is lower.

Headed Spacers

To fit ball journal wheels into castors, use a pair of headed spacer bushes. These sleeve the bore and increase the hub width to match the castor frame and axle bolt. Details on request.



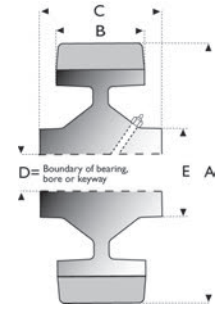
Wheel Dia. (mm) A	Tread Width (mm) B	Bearing Bore Size (mm) C	Hub Length (mm) D	Load Cap. (kg)	Bearing Type	Catalogue Reference	USED IN CASTOR SERIES
50	14	12	17	80	Plain	050PT0L	L
50	19	8	24	80	Plain	050PT02	2
63	25	10	30	135	Plain	063PT03	3
63	25	9.5	31	135	Roller	063PTR3	3
75	19	10	24	90	Plain	075PT02	2
75	25	10	30	200	Plain	075PT03	3
75	25	12	45	175	Plain	075PT04	4
75	25	12	45	175	Roller	075PT14	4
75	25	15	45	175	Ball Journal	075PT24	4
100	19	10	24	150	Plain	100PT02	2
100	19	10	30	150	Plain	100PT03	3
100	29	12	45	250	Plain	100PT04	4
100	29	12	45	250	Roller	100PT14	4
100	38	20	60	340	Roller	100PT1H	G, H
100	38	20	57	340	Ball Journal	100PT2H	G, H
125	32	12	45	350	Plain	125PT04	4
125	32	12	45	350	Roller	125PT14	4
125	38	20	60	425	Roller	125PT1H	G, H
125	38	20	57	425	Ball Journal	125PT2H	G, H
150	38	20	60	730	Plain	150PT05	5, G, H
150	38	20	60	730	Roller	150PT15	5, G, H, P
150	38	20	57	730	Ball Journal	150PT2H	5, G, H, O
150	38	25	60	730	Roller	150PT1A	-
175	45	25	60	910	Roller	175PT1A	-
200	45	20	60	1100	Plain	200PT05	5, G, H
200	45	20	60	1100	Roller	200PT15	5, G, H, P
200	45	20	57	1100	Ball Journal	200PT2H	5, G, H, P
200	45	25	60	1100	Plain	200PT0A	-
200	45	25	60	1100	Roller	200PT1A	-
200	45	19	60	1100	Taper Roller	200PTTA	-
200	57	20	57	1300	Ball Journal	200PT2A	G, H, P
200	75	19	89	1800	Taper Roller	200PTTT	T, X
200	75	25.4	89	1800	Taper Roller	200PTTC	T
200	75	25	78	1800	Ball Journal	200PT2P	P
200	75	30	76	1800	Ball Journal	200PT2Q	-
250	45	25	60	1200	Roller	250PT1H	H, P
250	45	25	57	1200	Ball Journal	250PT2H	H, P
250	75	19	89	2500	Taper Roller	250PTTT	T, X
250	75	25.4	89	2500	Taper Roller	250PTTC	T
250	75	25	78	2500	Ball Journal	250PT2P	P
250	75	30	76	2500	Ball Journal	250PT2Q	-
300	45	25	60	1400	Roller	300PT1H	H, P
300	45	25	57	1400	Ball Journal	300PT2H	H, P
300	75	19	89	2750	Taper Roller	300PTTT	T, X
300	75	25.4	89	2750	Taper Roller	300PTTB	T
300	75	25	78	2750	Ball Journal	300PT2P	-
300	75	30	76	2750	Ball Journal	300PT2Q	-
400	100	25.4	114	4500	Taper Roller	400PTTT	T
400	100	35	104	4500	Ball Journal	400PT2A	-
400	125	50	121	6700	Taper Roller	400PT3Z	Y, Z



PT Designer Series

Polyurethane Tyred Wheels

Aimed at offering the Design Engineer an unrivalled choice, this range of high-performance cast-iron wheels with Revvothane Polyurethane tyres offer specific boundary dimensions into which can be incorporated bearings, bores or keyways as required. Revvothane is superb as a polyurethane elastomer for wheels in conveyor and transportation systems, offering high load bearing capacity, minimal build-up of heat and high abrasion resistance.



Wheel Dia. (mm)	Tread Width (mm)	Load Capacity (kg)	Axle Bore (mm)	Dimensions (mm)					Part Number		
				A	B	C	D	E	Plain Bore	Plain Bore Keywayed	Ball Bearing
75	35	300	12	75	35	35	48	55	07535PT012	-	07535PT212
	35	300	20	75	35	35	45	55	-	-	07535PT220
100	40	500	12	100	40	45	48	57	10040PT012	-	-
	40	500	20	100	40	45	48	57	10040PT020	-	10040PT220
	40	500	25	100	40	45	48	57	10040PT025	-	10040PT225
125	45	600	25	125	45	50	48	55	12545PT025	-	12545PT225
150	35	700	20	150	35	40	50	60	15035PT020	-	15035PT220
	35	700	25	150	35	40	50	60	-	-	15035PT225
	50	900	20	150	50	55	52	65	-	-	15050PT220
	50	900	25	150	50	55	52	65	15050PT025	15050PTU25	15050PT225
	50	900	30	150	50	55	52	65	15050PT030	-	-
200	40	1000	25	200	40	50	70	80	-	20040PTU25	-
	40	1000	30	200	40	50	70	80	-	20040PTU30	-
	60	1300	30	200	60	70	70	80	20060PT030	-	20060PT230
	60	1300	35	200	60	70	70	80	-	20060PTU35	-
250	45	1200	30	250	45	55	80	100	-	25045PTU30	-
	70	2000	30	250	70	80	80	100	25070PT030	-	-
300	75	2800	30	300	75	85	90	115	30075PT030	-	-
	75	2800	50	300	75	85	90	115	-	30075PTU50	-

Pt 'Designer' Series Selection Notes:

*Stated load capacities are for operation under ideal conditions, i.e. the wheel operates infrequently on a smooth surface without axial loading

*Wheel loadings must be reduced as follows for any of the following conditions Frequent use: In use for more than 45 minutes continuous operation, reduce loadings by 25%

Driving applications:

- Reduce Loadings by 30%
- Speeds 6 - 10kph: Reduce Loadings by 20%
- Speeds 10 - 16kph: Reduce Loadings by 30%

SPECIAL NOTE

Reductions are cumulative if more than one condition exists

Web: www.keystonecastors.co.uk
Email: sales@keystonecastors.com

Midlands: 0121 772 1010
Northern: 0161 865 3800

The Key Range Compact Catalogue

Order yours **TODAY** on:
0121 772 1010



KEYSTONE
CASTOR COMPANY



Midlands: 0121 772 1010

17

Northern: 0161 865 3800

KEYSTONE
CASTORS & WHEELS

**The premier
castor company**

KEYSTONE

CASTOR COMPANY

T: 0121 772 1010

F: 0121 773 1010

sales@keystonecastors.com

www.keystonecastors.co.uk

Keystone Castor Company

Head Office & Central Warehouse

Unit 1, St. Andrews Trading Estate

111 Great Barr Street

Digbeth

Birmingham

B9 4BB

